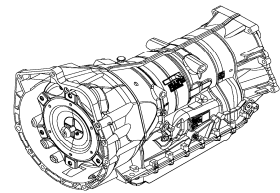
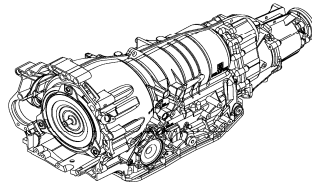
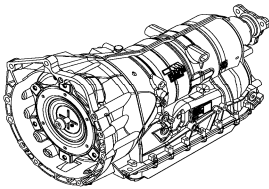


# ZF 6HP19A



6HP19A

Automatic Transmission Spare Parts Catalog



## Warranty Information

Warranty coverage for ZF passenger car transmission spare parts and kits covers the first 12 months after installation in the vehicle, or 24 months after purchase from ZF Services.

Warranty of the product is limited to replacement or repair, if found to be defective in ZF material or workmanship, and specifically does not cover removal, reinstallation, or any costs incidental to the repair of the vehicle, or any kind of consequential damages.

All warranty and/or non-warranty returns must be approved.

## Disclaimer

The specifications and information shown in this catalog have been compiled from accepted and reliable sources and is believed to be accurate at the time of publication. While ZF Services believes this information is correct, no guarantee or warranty is made as to the accuracy of the information and ZF Services cannot and does not accept or assume any responsibilities for errors, omissions, or consequential harm or damages. Replacement parts should not be used when they do not appear to fit. ZF Services disclaims all liability and responsibility for any harm resulting from any such modifications.

## Copyright

Printed in USA - Copyright © 2008 ZF Services

No part of this publication may be reproduced, stored in a retrieval system, or transmitted, in any form or by any means, electronic, mechanical, photocopying, recording, or otherwise, without prior written permission of ZF Services.

## Distributed By





## Table of Contents

## 6HP19A

**Technical Information**

Torque, Gear Ratio & Weight_____	2
Oil Capacity_____	2
6HP19A Lubricants_____	2
6HP19A Technical Literature_____	2
6HP19A General Transmission Oil Filling Procedure_____	3 - 5
6HP19A Differential Transmission Oil Filling Procedure_____	6 - 7
How To Use This Catalog_____	8
Type Plate Information_____	9

**6HP19A 1071 040 XXX****Spare Parts**

Gearbox Housing Group_____	10
Torque Converter Group_____	11
Oil Supply Group_____	12
Front Planetary Group_____	13
Rear Planetary Group_____	14
Coupling A Group_____	15
Coupling B Group_____	16
Coupling C Group_____	17
Coupling D Group_____	18
Coupling E Group_____	19
Front Axle Output Group_____	20 - 21
Rear Axle Output Group_____	22
Distributor Group_____	23
Front Axle Differential Group_____	24 - 25
Filter Group_____	26
Mechatronic Group_____	27
Gear Shift System M-Shift Group_____	28
Parking Lock Group_____	29

**Selective Shims, Snap Rings & Kits Content**

Selective Shims_____	30 - 34
Selective Snap Rings_____	35 - 36
Kits Content_____	37 - 39



Technical Information

**Torque, Gear Ratio & Weight**

Input Torque	1 Gear	2 Gear	3 Gear	4 Gear	5 Gear	6 Gear	Rev Gear	Drive	Weight (incl. oil)
258 ftlbs to 295 ftlbs (model specific)	4.17	2.34	1.52	1.14	0.87	0.69	3.40	FWD AWD	~165 lbs.

**Oil Capacity**

9 liters (9.51 Quarts) + 0.5 liter for cooling system

**6HP19A Lubricants**

Amount	ZF Part #	Oil Grade	Notes
209 Liter Drum	S671 090 280	ZF LifeGuardFluid 6+	For Audi / VW only.
20 Liter Canister	S671 090 281	ZF LifeGuardFluid 6+	For Audi / VW only.

**Note:** ZF recommends the use of LifeGuardFluid 6+ for optimal performance.

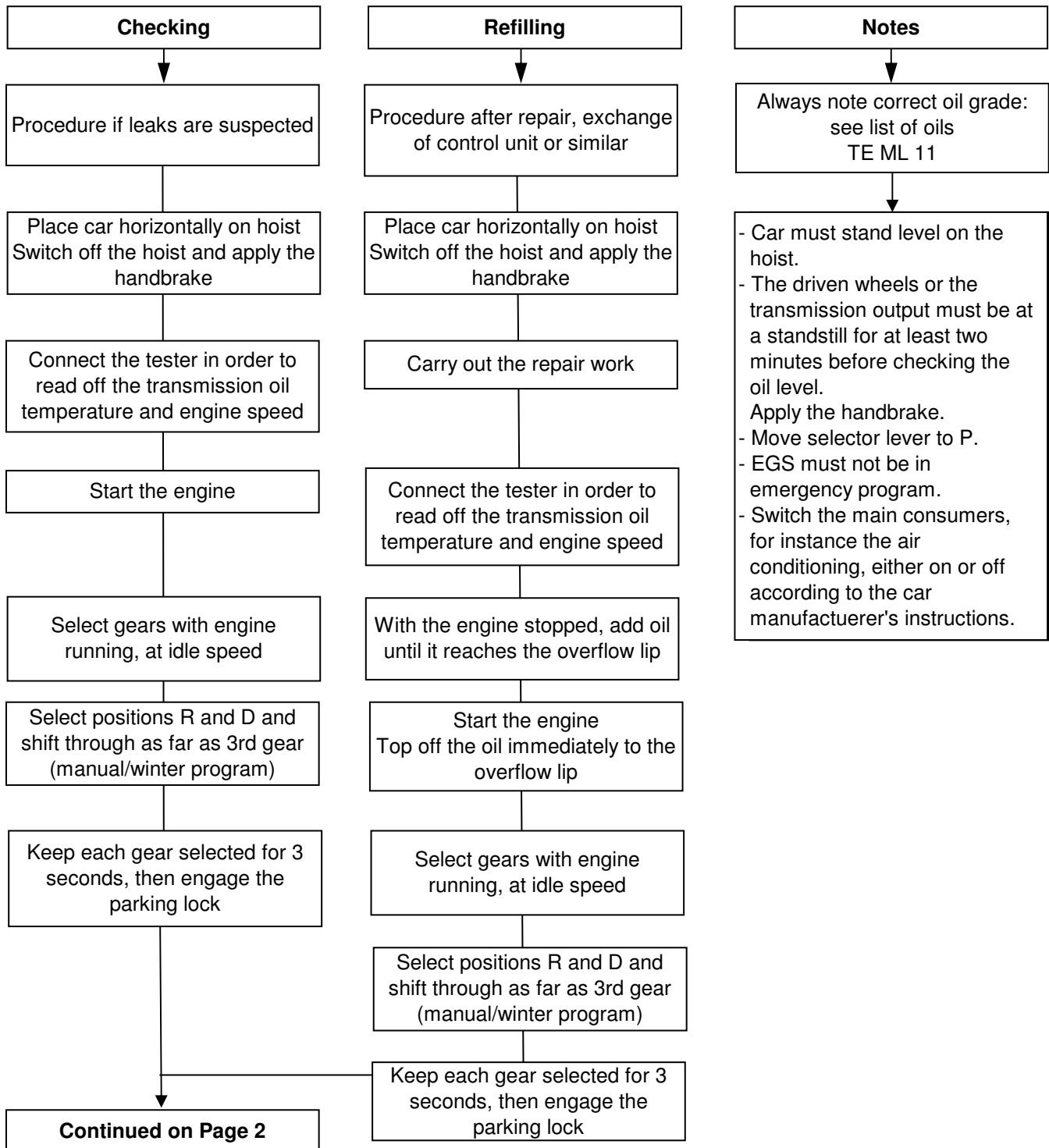
**6HP19A Technical Literature**

Language	ZF Part #	Description
English	1071 766 702	6HP19A REPAIR MANUAL (CD)
English	1068 766 701	6HP19A FUNCTIONAL DESCRIPTION - BMW (CD)
English	1068 766 704	6HP19A FUNCTIONAL DESCRIPTION - AUDI (CD)



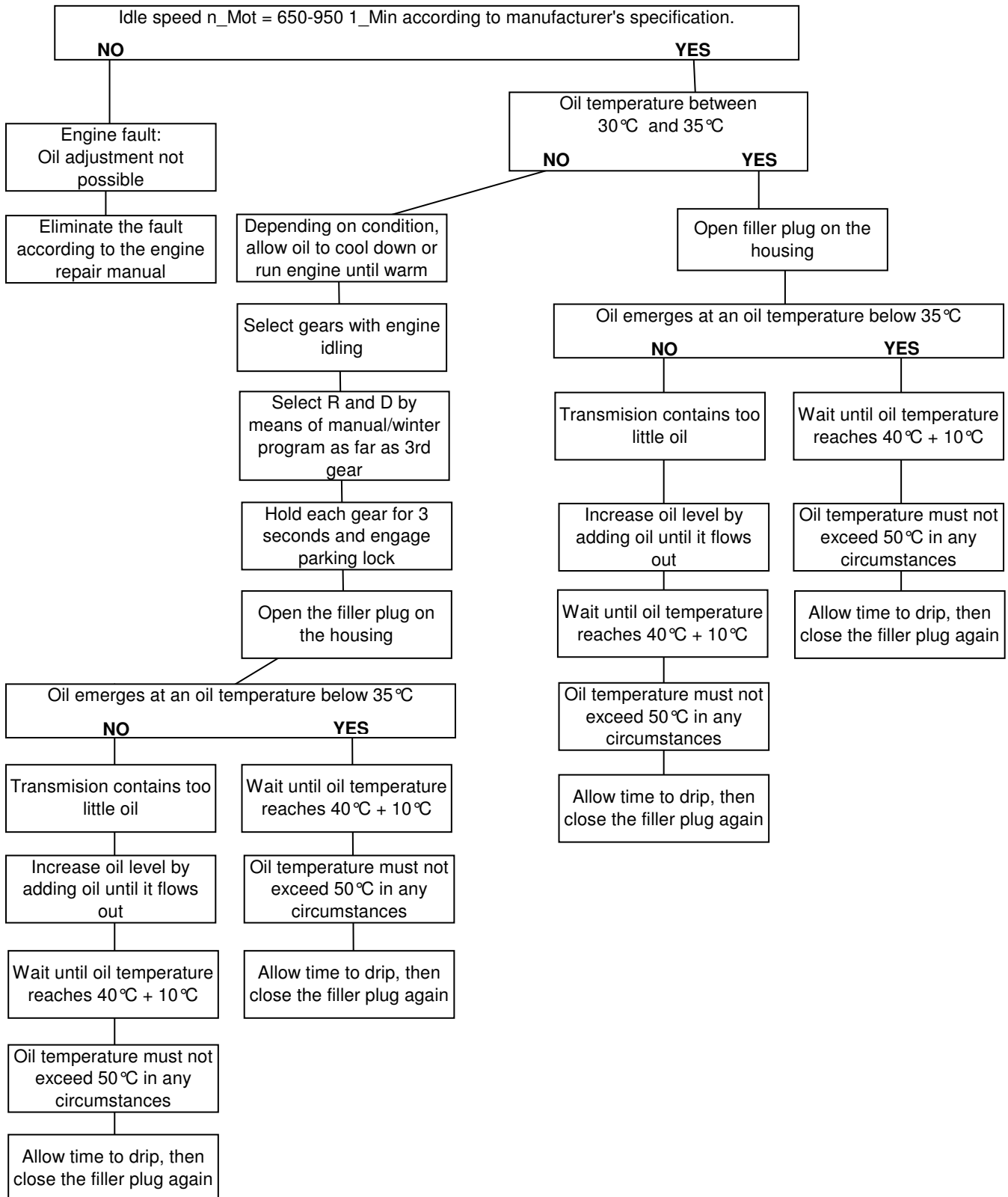
6HP19A General Transmission Oil Filling Procedure

**Adding oil to 6HP19A automatic transmission - general - up to overflow at 40°C**



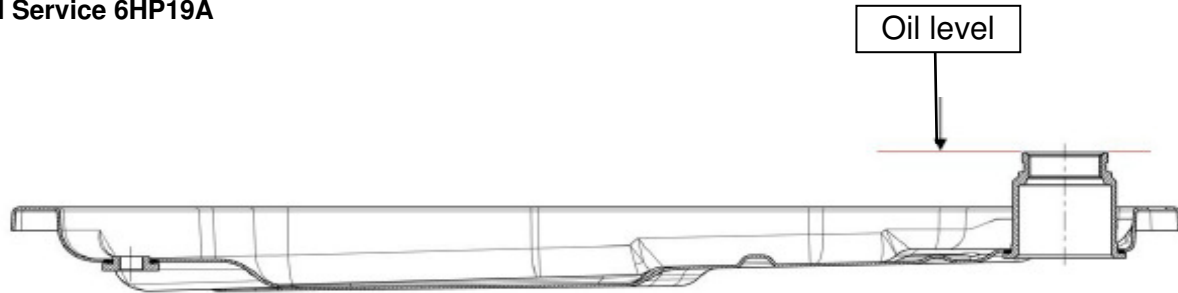


6HP19A General Transmission Oil Filling Procedure (continued)



6HP19A General Transmission Oil Filling Procedure (continued)

Oil Service 6HP19A



Oil drain plug	M10X1
Internal hexagon	5 mm
Tightening torque	12 Nm ± 1.2 Nm

Oil filler screw and oil level screw	M30X1.5
Internal hexagon	17 mm
Tightening torque	80 Nm ± 8 Nm

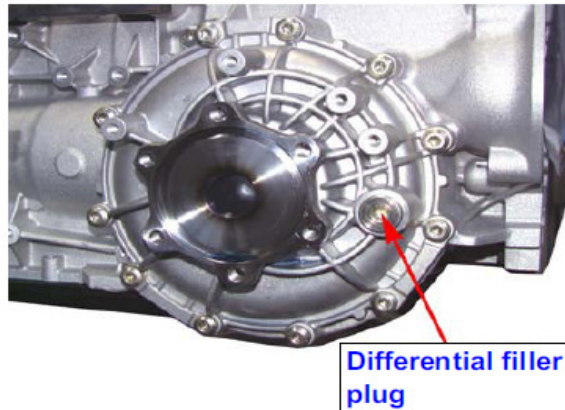
## 6HP19A Differential Transmission Oil Filling Procedure

### Adding oil to 6HP19A differential - general

Differential with separate oil content

The differential is filled to the overflow mark while cold (approx. 20°C).

The car must be standing on a level surface with the engine switched off.



Content ex-factory: 1.0 liter SAF AG4 1016



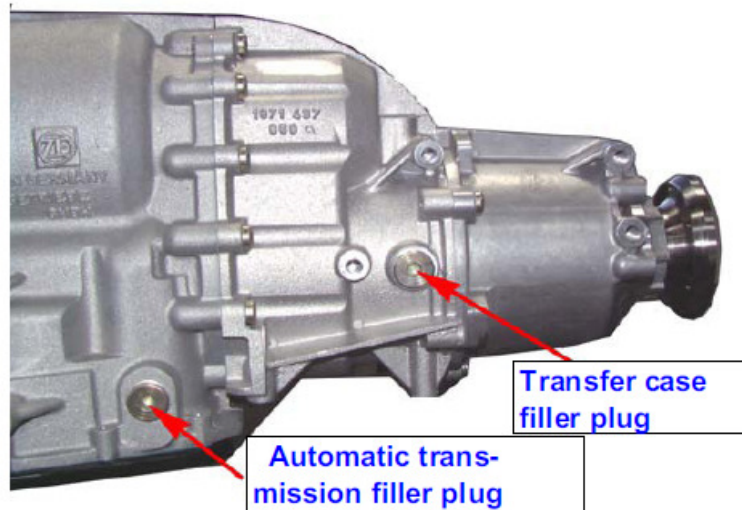
6HP19A Differential Transmission Oil Filling Procedure (continued)

**Adding oil to 6HP19A transfer case - general**

Transfer case with separate oil content

Transfer case with Torsen differential (RA)

Fill the transfer case to the overflow mark while cold (approx. 20°C). The car must be standing on a level surface with the engine switched off.



Transfer case total filling (separate)	0.528 liter SAF - AG4 1016 0.022 liter STURACO FM 1992
Transfer case in combined transmission	0.528 liter SAF - AG4 0.022 liter STURACO FM 1992

**WARNING:**

The "STURACO FM 1992" additive is only needed after renewal (exchange) of the Torsen differential. After assembly, pour the additive directly (axially) into the Torsen differential with the transfer case in a vertical position.



## How To Use This Catalog

### Table of Contents

Each transmission group of this catalog is listed in the table of contents. This spare parts catalog includes only transmission specification numbers for North American applications.

### Technical Information

All technical information is specific to the transmission models that are referenced in this catalog. Weight and oil capacity information are only approximate and may vary by actual transmission specification. For any technical inquiry, please contact your preferred ZF passenger car transmission distributor for assistance. For a list of technical literature available from ZF or for answers to frequently asked questions about ZF transmissions visit us at [www.zf.com/na](http://www.zf.com/na).

### Spare Parts

Each transmission is divide into groups (e.g. gearbox housing group). The position number (**Position #**) is used to identify the location of each spare part in the transmission. A position number like 01.010 is either a spare part or an assembly. A position number like 01.010/110 is a subcomponent of an assembly. Please contact your preferred ZF passenger car transmission distributor about availability of assemblies and subcomponents.

Contact ZF for the most updated part number (for example: 6HP19 1071 040 XXX). Please, have the position number and model number prepared when you call. Thank you.

Use our toll free Service-Hotline: 1-800-451-2595.

The description (**Description**) identifies the spare part.

The quantity (**Quantity**) is the amount of spare parts included in one transmission model for a certain position number. The quantity may vary depending on the transmission specification and certain spare parts may be used in multiple positions in the transmission.

The notes column (**Notes**) gives more information about the spare part (e.g. included in a kit).

Example

### OIL SUPPLY GROUP

Position #	Description	Quantity	Notes
10.010	PUMP	1	
10.010/150	NEEDLE SLEEVE	1	
10.090	SHIM	1	Selective shim; see page 30.

### Selective Shims, Snap Rings & Kits Content

Each list for selective shims or snap rings is listed in this section of the catalog. Please measure the clearance according to the repair manual and select the required spare part from the table.

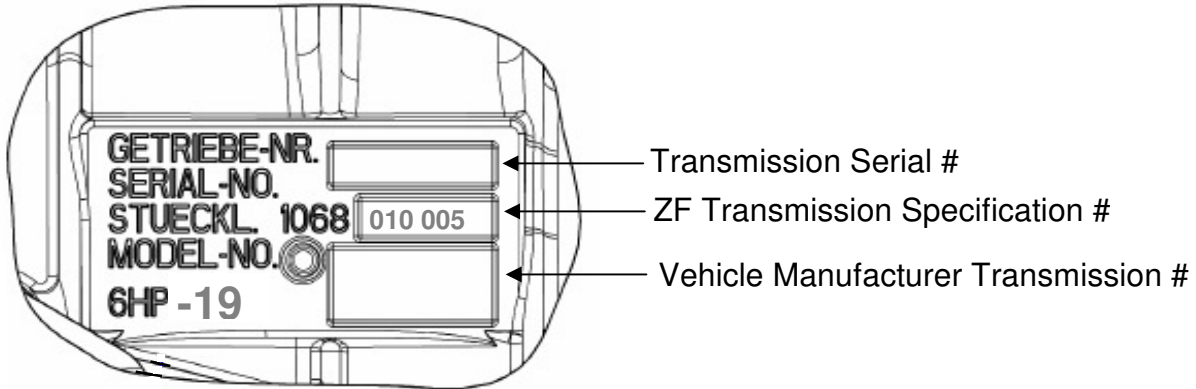
The kits content section shows all available kits for the transmission models that are referenced in this catalog, including the content of each kit.

**Mechatronic and Valve Body are only available as complete Service-Mechatronic.**

For a distributor in your area call ZF at 1-800-451-2595 or visit our website at [www.zf.com/na](http://www.zf.com/na).

## Type Plate Information

The type plate is located on the main housing of the transmission. Please refer to the ZF transmission specification # when searching for spare parts and kits in this catalog.

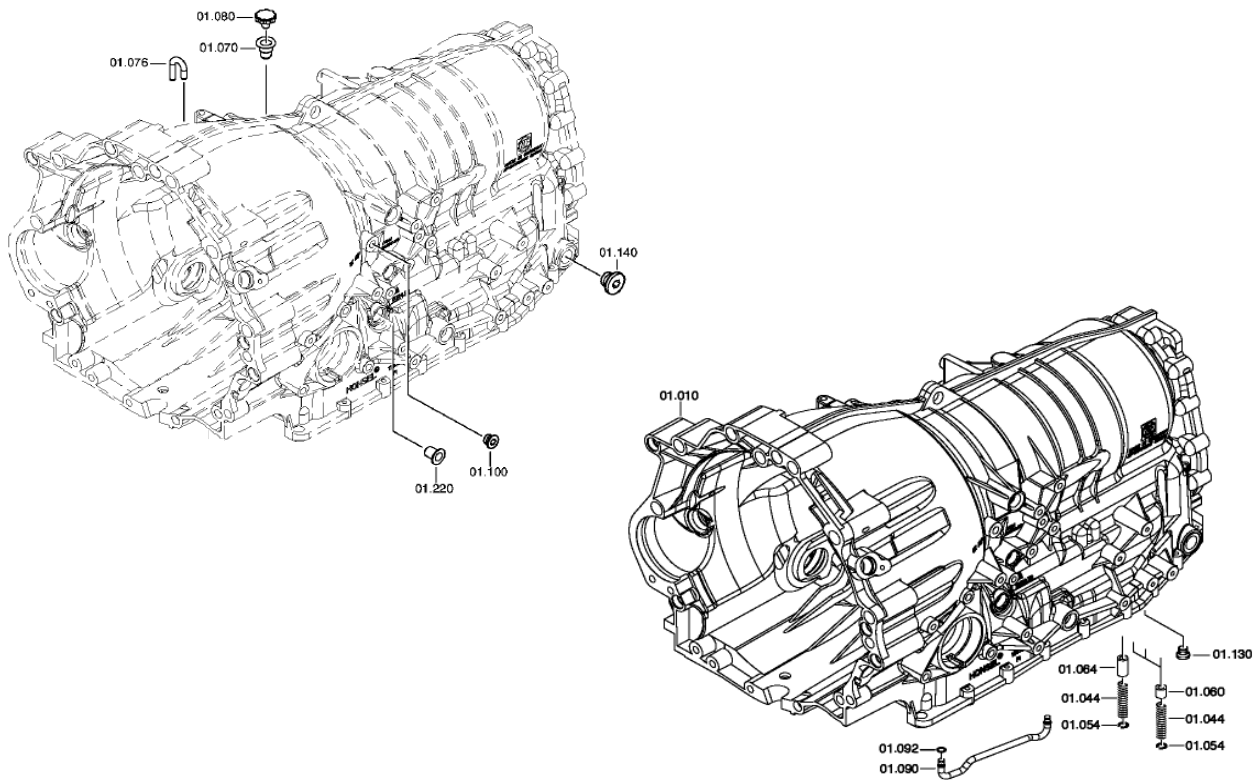




6HP19A 1071 040 XXX

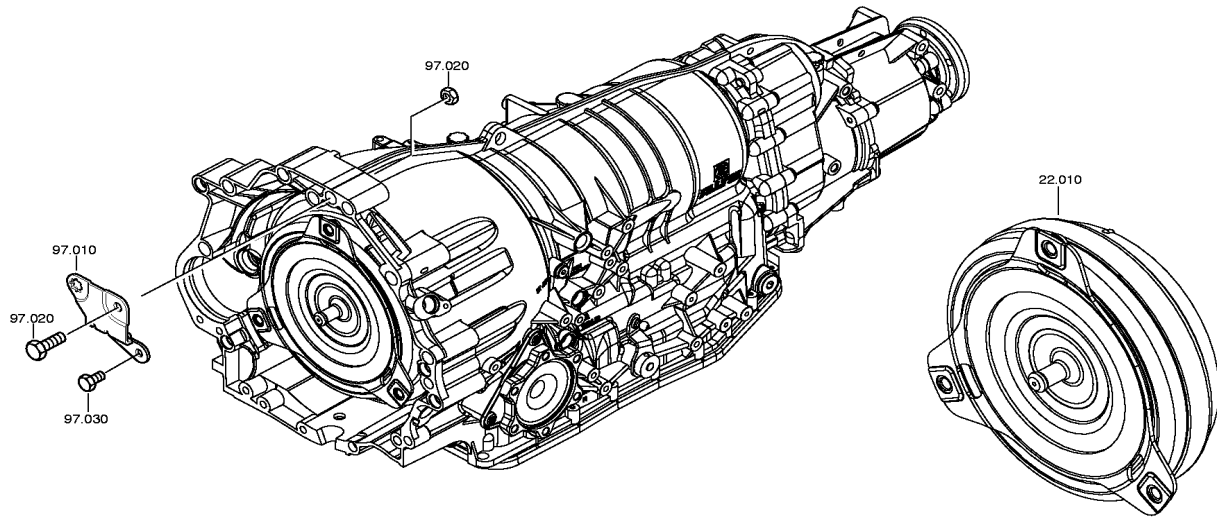
GEARBOX HOUSING GROUP

Position #	Description	Quantity	Notes
01.070	BREATHER TUBE	1	
01.076	BREATHER TUBE	1	
01.080	BREATHER COVER	1	
01.100	SCREW PLUG	1	Included in overhaul kit; see page 38.
01.140	SCREW PLUG	1	Included in overhaul kit; see page 38.
01.220	PLUG	1	
01.010	GEARBOX HOUSING	1	
01.044	COMPRESSION SPRING	4	
01.054	RETAINING RING	4	
01.060	SEALING SLEEVE	3	Included in overhaul kit; see page 38.
01.064	SEALING SLEEVE	1	Included in overhaul kit; see page 38.
01.090	OIL TUBE	1	
01.092	ROUND SEALING RING	2	Included in overhaul kit; see page 38.
01.130	SCREW PLUG	1	Included in overhaul kit; see page 38.



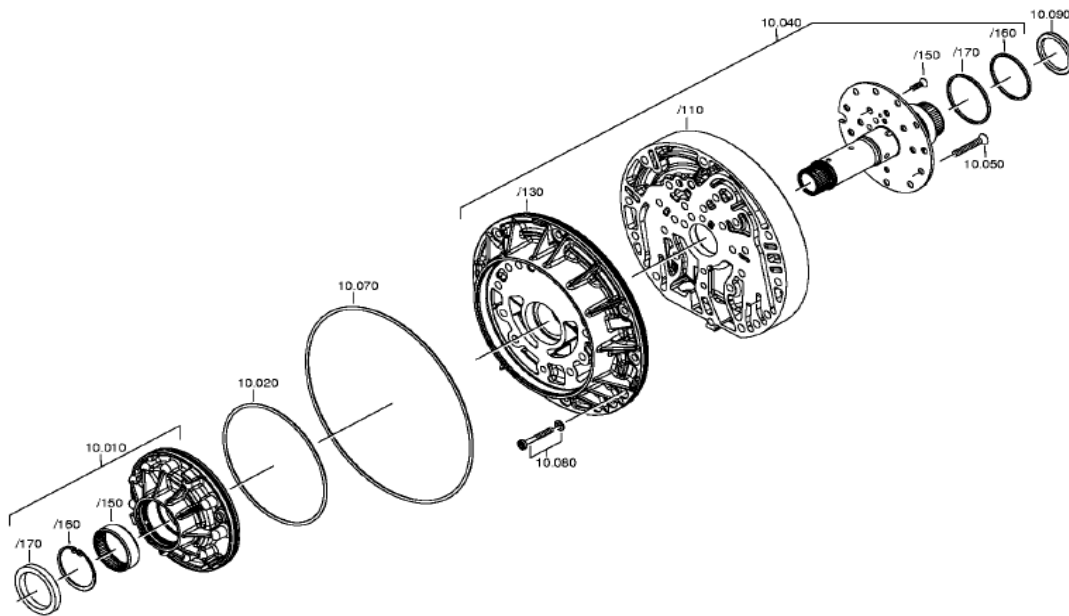
**TORQUE CONVERTER GROUP**

Position #	Description	Quantity	Notes
22.010	CONVERTER	1	
97.010	RETAINING CLIP	1	
97.020	BOLT + NUT	1	
97.030	CAP SCREW	1	



**OIL SUPPLY GROUP**

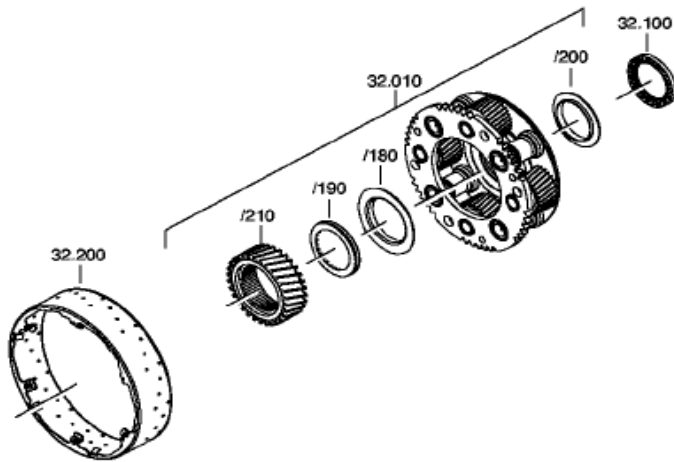
Position #	Description	Quantity	Notes
10.010	PUMP ASSEMBLY	1	
10.010/150	NEEDLE SLEEVE	1	
10.010/160	SNAP RING	1	
10.010/170	SHAFT SEAL	1	Included in overhaul kit; see page 39.
10.020	ROUND SEALING RING	1	Included in overhaul kit; see page 39.
10.040	INTERMEDIATE PLATE ASSEMBLY	1	
10.040/110	INTERMEDIATE PLATE	1	
10.040/130	CENTERING PLATE	1	
10.040/150	COUNTER SPRING	6	M6X28
10.040/160	PISTON RING	1	Included in overhaul kit; see page 39.
10.040/170	PISTON RING	1	Included in overhaul kit; see page 39.
10.050	COUNTER SPRING	11	M6X52
10.070	ROUND SEALING RING	1	Included in overhaul kit; see page 39.
10.080	TORX SCREW	11	M6X8; Included in overhaul kit; see page 39.
10.090	SHIM	1	Selective shim; see page 30.





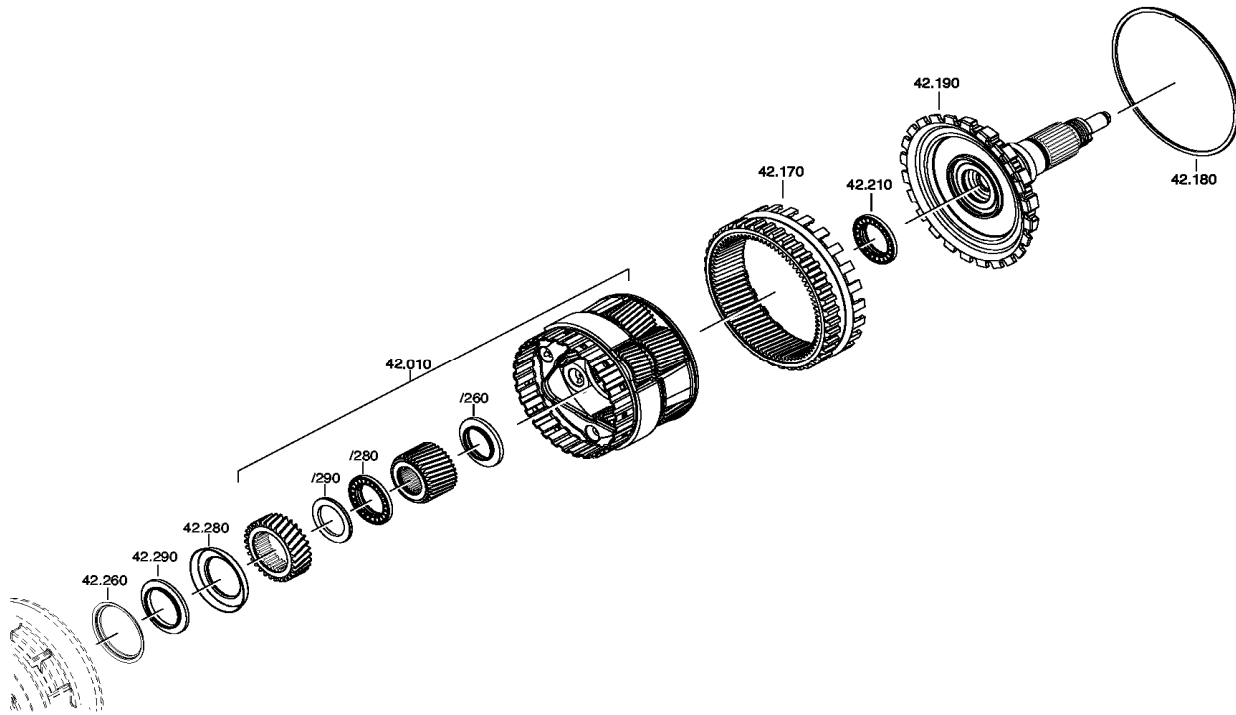
**FRONT PLANETARY DRIVE GROUP**

Position #	Description	Quantity	Notes
32.010	PLANET CARRIER	1	
32.010/180	ANGLE DISC	1	
32.010/190	AXIAL NEEDLE BEARING	1	
32.010/200	ANGLE DISC	1	
32.010/210	SUN GEAR	1	
32.100	AXIAL NEEDLE BEARING	1	
32.200	OIL COLLECTING PLATE	1	



**REAR PLANETARY DRIVE GROUP**

Position #	Description	Quantity	Notes
42.010	PLANET CARRIER ASSEMBLY	1	
42.010/260	AXIAL NEEDLE BEARING	1	
42.010/280	AXIAL NEEDLE BEARING	1	
42.010/290	AXIAL WASHER	1	
42.170	RING GEAR	1	
42.180	SNAP RING	1	
42.190	OUTPUT SHAFT	1	
42.210	AXIAL NEEDLE BEARING	1	
42.260	STOP-RING	1	
42.280	ANGLE DISC	1	
42.290	AXIAL NEEDLE BEARING	1	

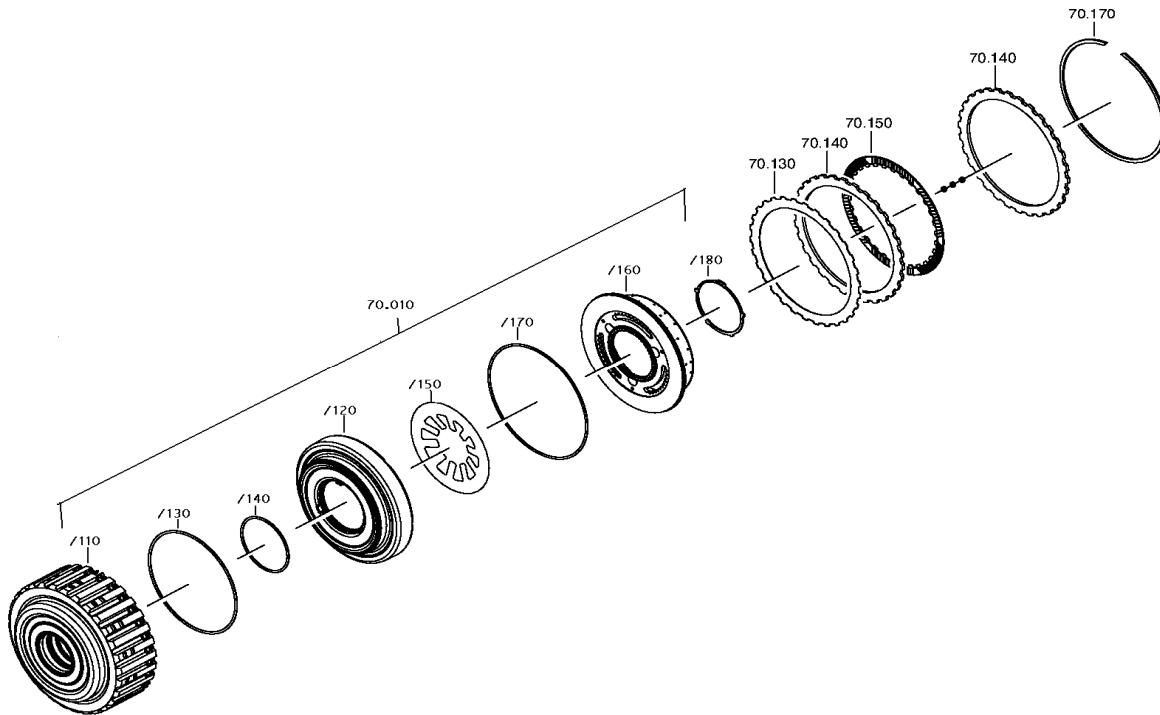






**COUPLING A GROUP**

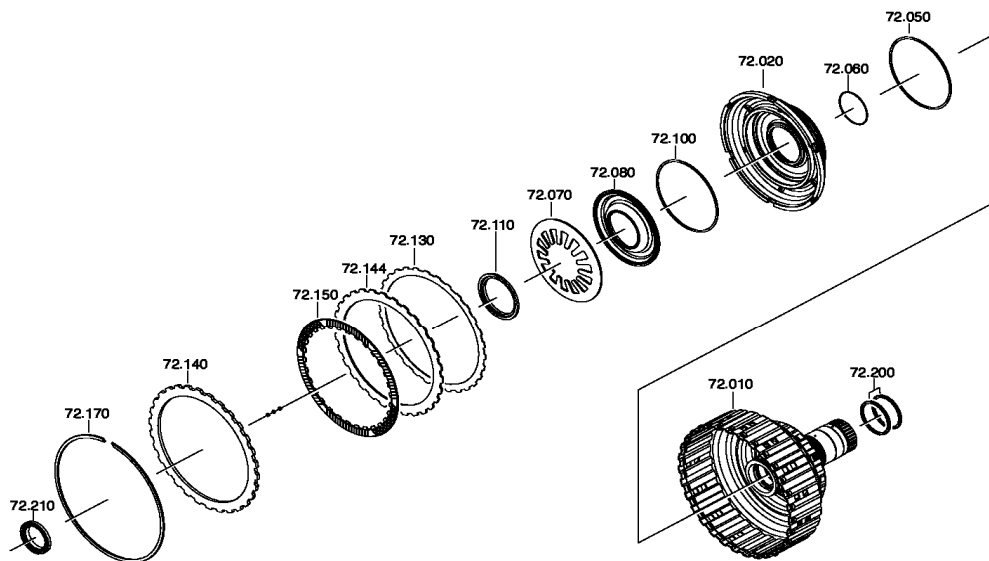
Position #	Description	Quantity	Notes
70.010	CYLINDER	1	
70.010/110	CYLINDER	1	
70.010/120	PISTON	1	
70.010/130	PROFILED SEALING RING	1	Included in overhaul kit; see page 38.
70.010/140	ROUND SEALING RING	1	Included in overhaul kit; see page 38.
70.010/150	CUP SPRING	1	
70.010/160	OIL DAM	1	
70.010/170	PROFILED SEALING RING	1	Included in overhaul kit; see page 38.
70.010/180	K-RING	1	
70.130	UNDULATING SPRING	1	
70.140	STEEL PLATE	5	3.00 mm; Included in steel kit; see page 37.
70.150	FRICTION PLATE	4	Included in friction kit; see page 37.
70.170	SNAP RING	1	Selective snap ring; see page 35.





**COUPLING B GROUP**

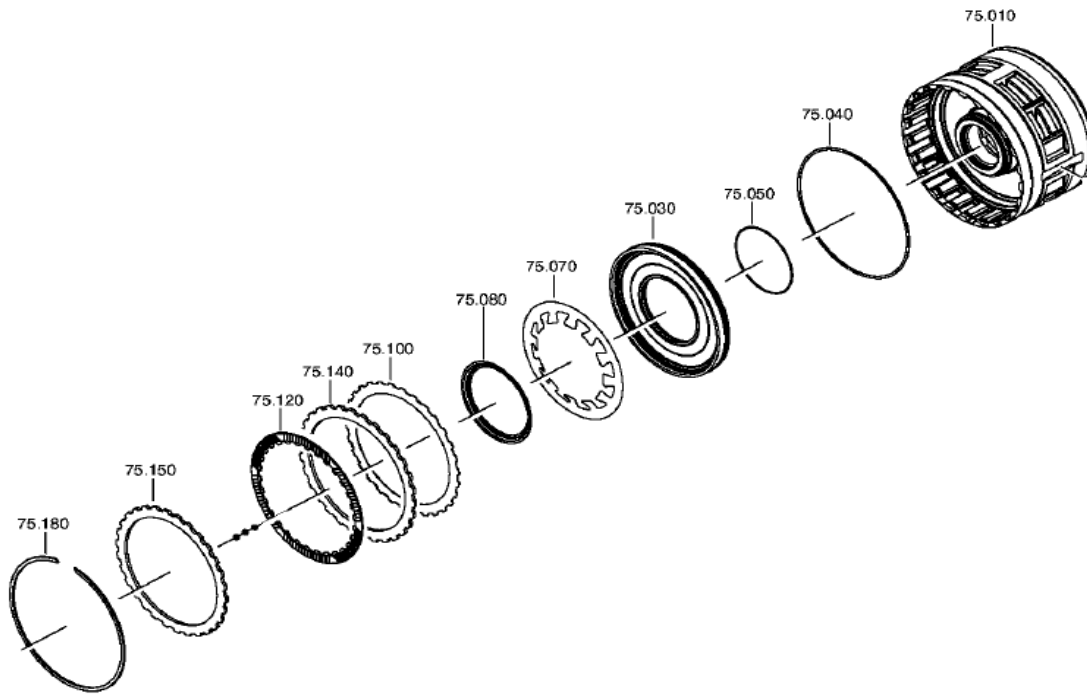
Position #	Description	Quantity	Notes
72.010	SUN GEAR SHAFT	1	
72.020	PISTON	1	
72.050	ROUND SEALING RING	1	Included in overhaul kit; see page 38.
72.060	ROUND SEALING RING	1	Included in overhaul kit; see page 38.
72.070	CUP SPRING	1	
72.080	OIL DAM	1	
72.100	ROUND SEALING RING	1	Included in overhaul kit; see page 38.
72.110	SPLIT RING	1	
72.130	UNDULATING SPRING	1	
72.140	END PLATE	1	Included in steel kit; see page 37.
72.144	STEEL PLATE	6	2.40 mm; Included in steel kit; see page 37.
72.150	FRICTION PLATE	6	Included in friction kit; see page 37.
72.170	SNAP RING	1	Selective snap ring; see page 35.
72.200	PISTON RING	2	Included in overhaul kit; see page 38.
72.210	AXIAL NEEDLE BEARING	1	





**COUPLING C GROUP**

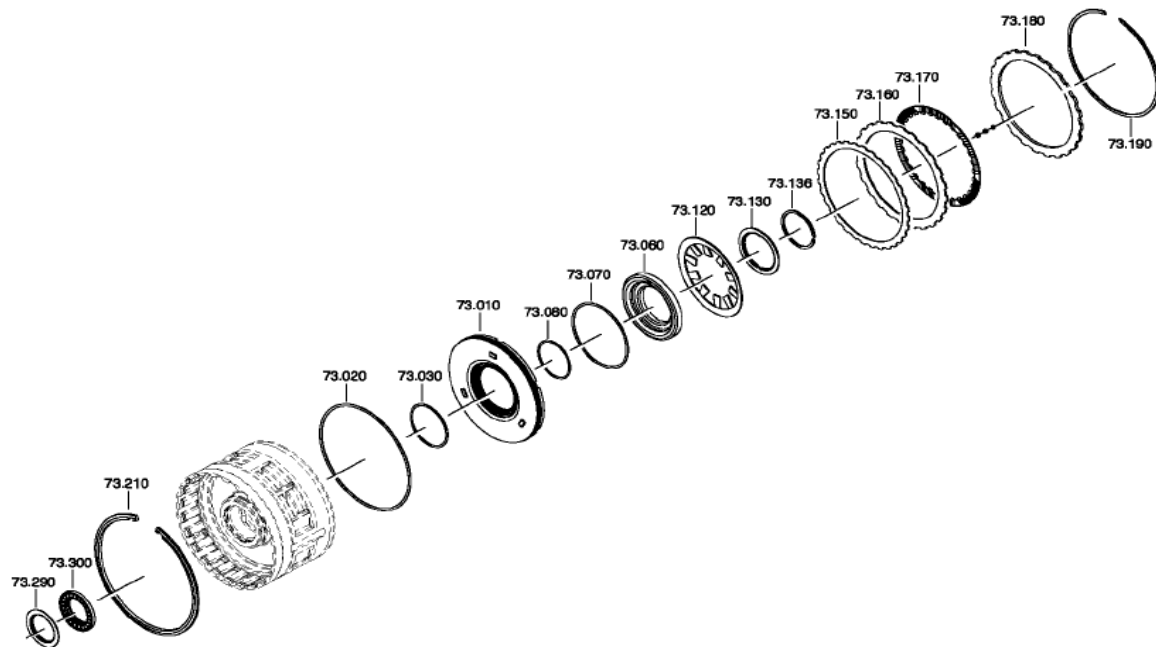
Position #	Description	Quantity	Notes
75.010	CYLINDER	1	
75.030	PISTON	1	
75.040	ROUND SEALING RING	1	Included in overhaul kit; see page 38.
75.050	ROUND SEALING RING	1	Included in overhaul kit; see page 38.
75.070	CUP SPRING	1	
75.080	SPLIT RING	1	
75.100	UNDULATING SPRING	1	
75.120	FRICTION PLATE	4	Included in friction kit; see page 37.
75.140	STEEL PLATE	4	2.50 mm; Included in steel kit; see page 37.
75.150	END PLATE	1	3.50 mm; Included in steel kit; see page 37.
75.180	SNAP RING	1	Selective snap ring; see page 35.





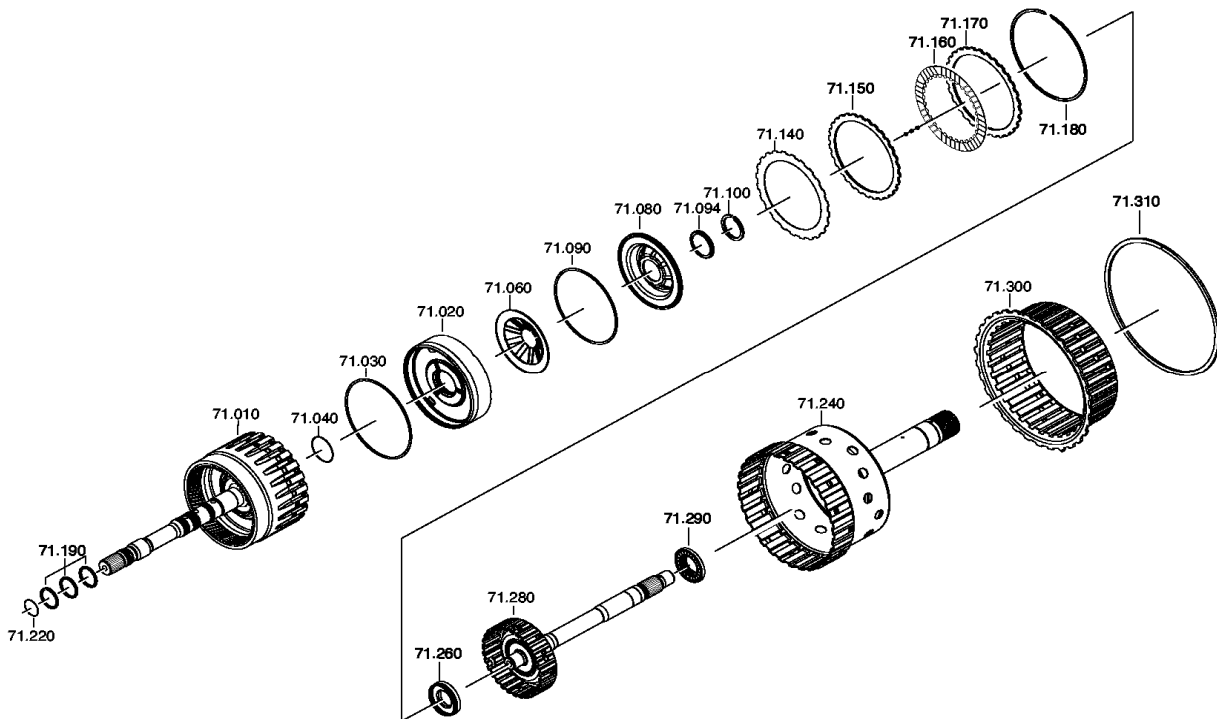
**COUPLING D GROUP**

Position #	Description	Quantity	Notes
73.010	PISTON	1	
73.020	ROUND SEALING RING	1	Included in overhaul kit; see page 38.
73.030	ROUND SEALING RING	1	Included in overhaul kit; see page 38.
73.060	OIL DAM	1	
73.070	ROUND SEALING RING	1	Included in overhaul kit; see page 38.
73.080	ROUND SEALING RING	1	Included in overhaul kit; see page 38.
73.120	CUP SPRING	1	
73.130	SUPPORT SHIM	1	
73.136	SNAP RING	1	2.00 mm
73.150	UNDULATING SPRING	1	
73.160	STEEL PLATE	5	1.80 mm; Included in steel kit; see page 37.
73.170	FRICTION PLATE	5	Included in friction kit; see page 37.
73.180	END PLATE	1	3.50 mm; Included in steel kit; see page 37.
73.190	SNAP RING	1	Selective snap ring; see page 36.
73.210	SNAP RING	1	
73.290	ANGLE DISC	1	
73.300	AXIAL NEEDLE BEARING	1	



**COUPLING E GROUP**

Position #	Description	Quantity	Notes
71.010	INPUT SHAFT	1	
71.020	PISTON	1	
71.030	ROUND SEALING RING	1	Included in overhaul kit; see page 38.
71.040	ROUND SEALING RING	1	Included in overhaul kit; see page 38.
71.060	CUP SPRING	1	
71.080	OIL DAM	1	
71.090	ROUND SEALING RING	1	Included in overhaul kit; see page 38.
71.094	FIXING PLATE	1	
71.100	SNAP RING	1	
71.140	UNDULATING SPRING	1	
71.150	STEEL PLATE	4	2.10 mm; Included in steel kit; see page 37
71.160	FRICTION PLATE	4	Included in friction kit; see page 37.
71.170	END PLATE	1	3.50 mm; Included in steel kit; see page 37.
71.180	SNAP RING	1	Selective snap ring; see page 36.
71.190	SEALING RING	3	Included in overhaul kit; see page 38.
71.220	ROUND SEALING RING	1	
71.240	SUN GEAR SHAFT	1	
71.260	AXIAL NEEDLE BEARING	1	
71.280	INTERMEDIATE SHAFT	1	
71.290	AXIAL NEEDLE BEARING	1	
71.300	DISC CARRIER	1	
71.310	SNAP RING	1	



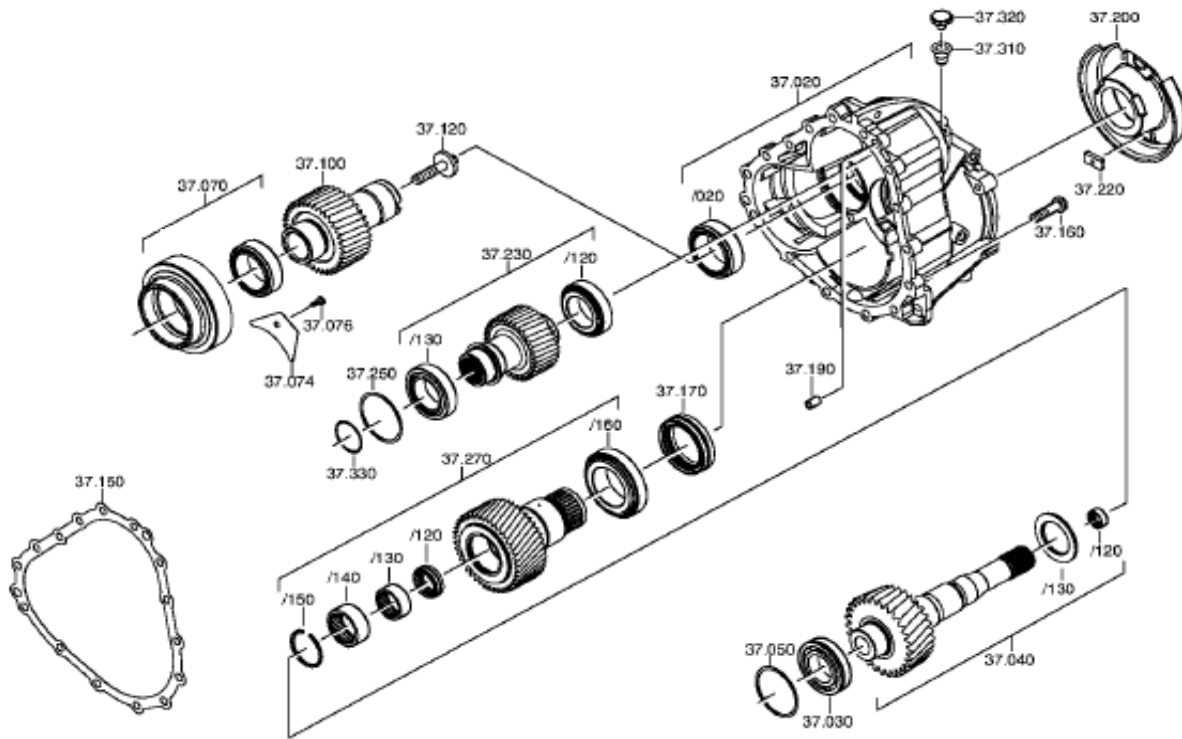


## FRONT AXLE OUTPUT GROUP

Position #	Description	Quantity	Notes
37.020	INTERMEDIATE HOUSING	1	
37.030	TAPER ROLLER BEARING	1	
37.040	FRONT AXLE SHAFT	1	
37.040/120	NEEDLE SLEEVE	1	
37.040/130	AXIAL BEARING	1	
37.050	SHIM	1	Selective shim; see page 30.
37.070	BEARING PLATE ASSEMBLY	1	
37.074	SHEET	1	
37.076	TORX SCREW	1	M6X16
37.100	SIDE SHAFT	1	
37.120	SCREW	1	
37.150	GASKET	1	Included in overhaul kit; see page 38.
37.160	TORX SCREW	15	M8X30
37.170	SHAFT SEAL	1	Included in overhaul kit; see page 38.
37.190	CLAMPING SLEEVE	2	
37.200	OIL BAFFLE PLATE	1	
37.220	MAGNET	1	
37.230	INPUT GEAR	1	
37.230/120	TAPER ROLLER BEARING	1	
37.230/130	TAPER ROLLER BEARING	1	
37.250	SHIM	1	Selective shim; see page 31.
37.270	OUTPUT GEAR	1	
37.270/120	SHAFT SEAL	1	Included in overhaul kit; see page 38.
37.270/130	NEEDLE SLEEVE	1	
37.270/140	NEEDLE SLEEVE	1	
37.270/150	SNAP RING	1	
37.270/160	TAPER ROLLER BEARING	1	
37.310	BREATHER TUBE	1	
37.320	BREATHER COVER	1	
37.330	SHIM	1	Selective shim; see page 31.

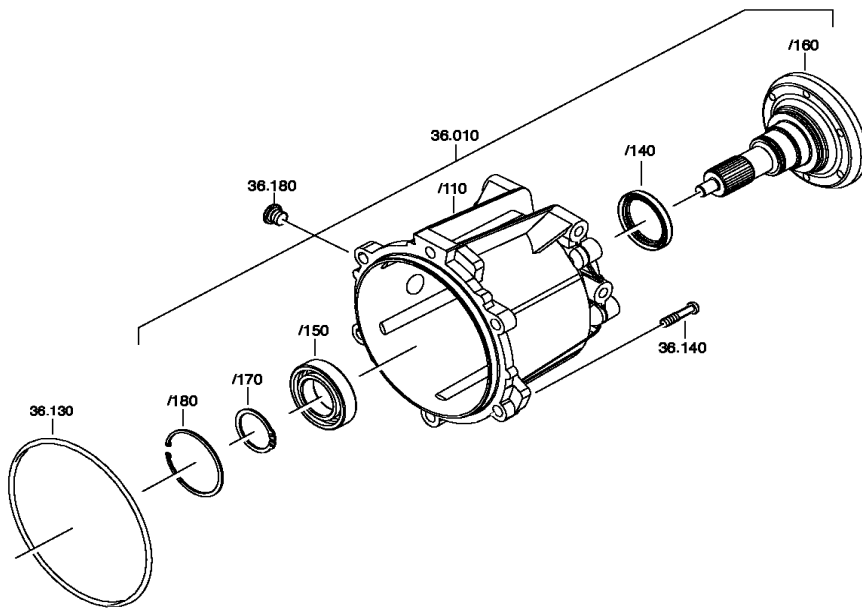
See diagram on next page.

FRONT AXLE OUTPUT GROUP (continued)



**REAR AXLE OUTPUT GROUP**

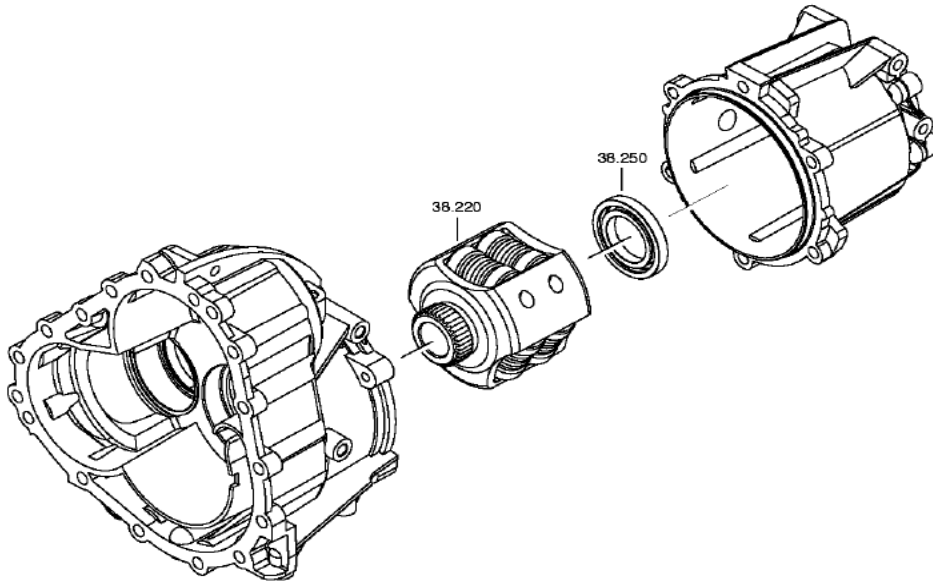
Position #	Description	Quantity	Notes
36.010	DISTRIBUTOR HOUSING ASSEMBLY	1	
36.010/110	DISTRIBUTOR HOUSING	1	
36.010/140	SHAFT SEAL	1	Included in overhaul kit; see page 39.
36.010/150	BALL BEARING	1	
36.010/160	OUTPUT FLANGE	1	
36.010/170	RETAINING RING	1	
36.010/180	RETAINING RING	1	
36.130	ROUND SEALING RING	1	Included in overhaul kit; see page 39.
36.140	TORX SCREW	6	
36.180	SCREW PLUG	1	





**DISTRIBUTOR GROUP**

Position #	Description	Quantity	Notes
38.220	DIFFERENTIAL	1	
38.250	BALL BEARING	1	



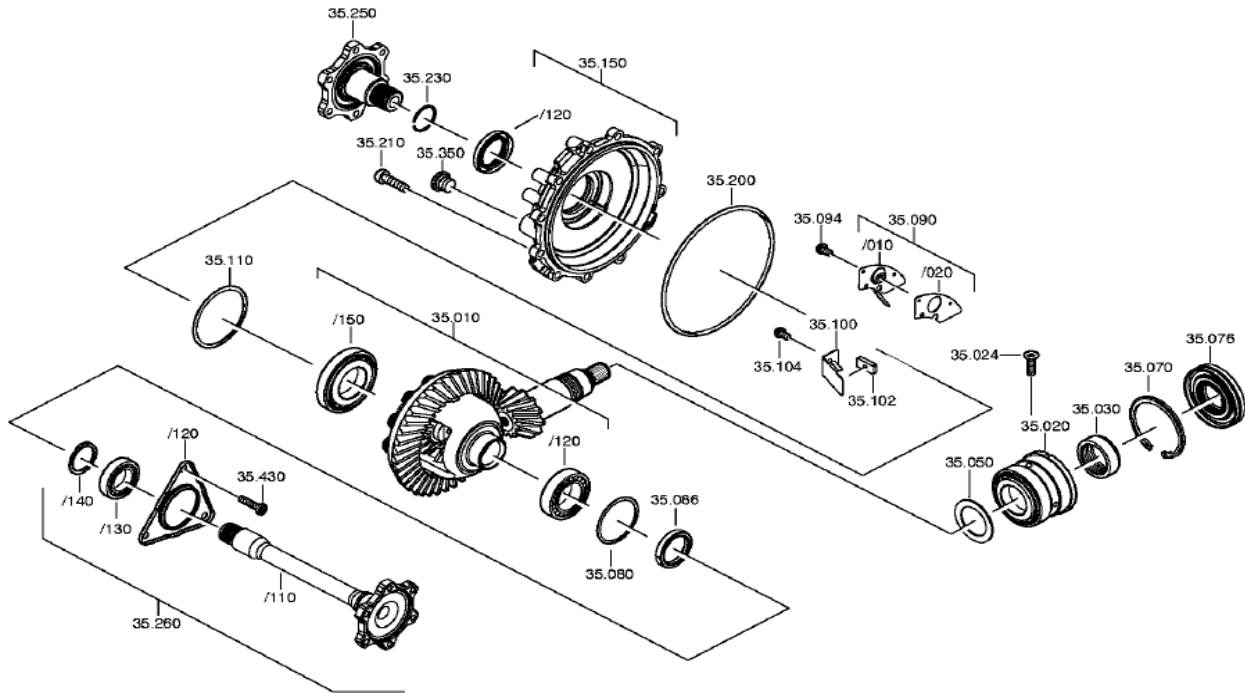


## FRONT AXLE DIFFERENTIAL GROUP

Position #	Description	Quantity	Notes
35.010	BEVEL GEAR SET	1	
35.010/120	TAPER ROLLER BEARING	1	
35.010/150	TAPER ROLLER BEARING	1	
35.020	TAPER ROLLER BEARING	1	
35.024	COUNTER SPRING	1	M6X20
35.030	NUT	1	
35.050	SHIM	1	Selective shim; see page 32.
35.070	RETAINING RING	1	
35.076	SHAFT SEAL	1	Included in overhaul kit; see page 38.
35.080	SHIM	1	Selective shim; see page 33.
35.086	SHAFT SEAL	1	Included in overhaul kit; see page 38.
35.090	COVER	1	
35.090/010	COVER	1	
35.090/020	GASKET	1	Included in overhaul kit; see page 38.
35.094	TORX SCREW	1	M6X16
35.100	BRACKET	1	
35.102	MAGNET	1	
35.104	TORX SCREW	1	M6X16
35.110	SHIM	1	Selective shim; see page 34.
35.150	COVER	1	
35.150/120	SHAFT SEAL	1	Included in overhaul kit; see page 38.
35.200	ROUND SEALING RING	1	Included in overhaul kit; see page 38.
35.210	TORX SCREW	11	M80X30
35.230	SNAP RING	1	
35.250	OUTPUT FLANGE	1	
35.260	FLANGE SHAFT	1	
35.260/110	FLANGE SHAFT	1	
35.260/120	COVER	1	
35.260/130	BALL BEARING	1	
35.260/140	CURVED RING	1	
35.350	SCREW PLUG	1	M18X1.5; Included in overhaul kit; see page 38.
35.430	TORX SCREW	3	M8X30

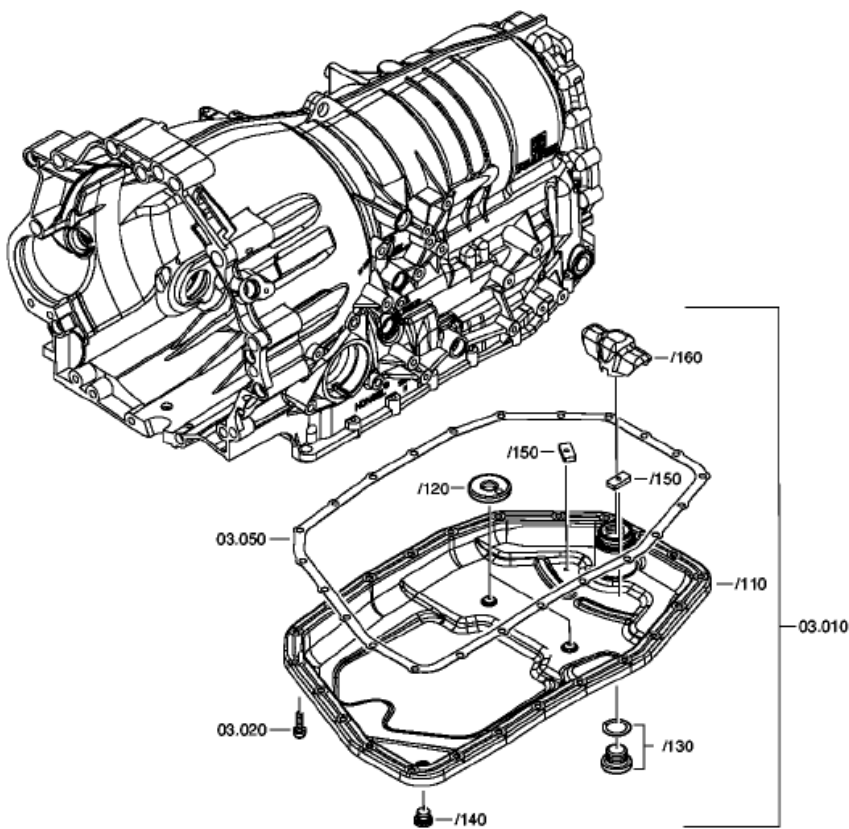
See diagram on next page.

FRONT AXLE DIFFERENTIAL GROUP (continued)



**FILTER GROUP**

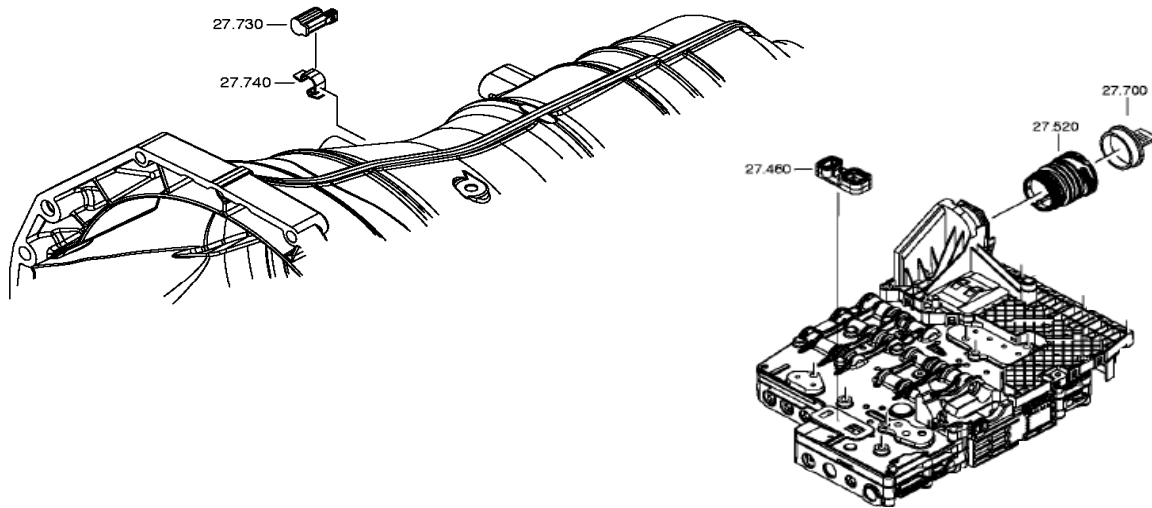
Position #	Description	Quantity	Notes
03.010	FILTER	1	
03.010/110	FILTER	1	
03.010/120	MAGNET	2	
03.010/130	SCREW PLUG	1	Included in overhaul kit; see page 38.
03.010/140	SCREW PLUG	1	M10X1; Included in overhaul kit; see page 38.
03.010/150	MAGNET	2	
03.010/160	CAP	1	
03.020	TORX SCREW	23	M6X23
03.050	GASKET	1	Included in overhaul kit; see page 38.





**MECHATRONIC GROUP**

Position #	Description	Quantity	Notes
27.460	GASKET	2	Included in overhaul kit; see page 38.
27.520	GUIDE SLEEVE	1	
27.700	CAP	1	
27.730	CAPACITOR	1	
27.740	CLAMP	1	
N/A	MECHATRONIC	1	Only complete Service-Mechatronics are available.



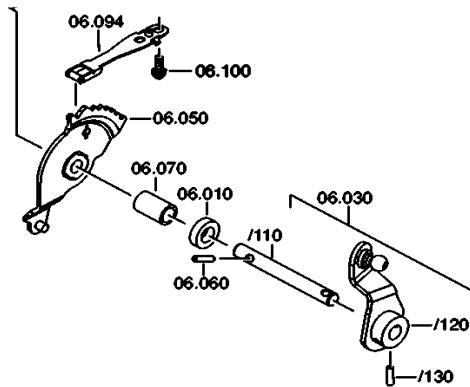
**CAUTION!**

Only complete Service-Mechatronics are available.

Contact your local ZF Parts distributor for more information.

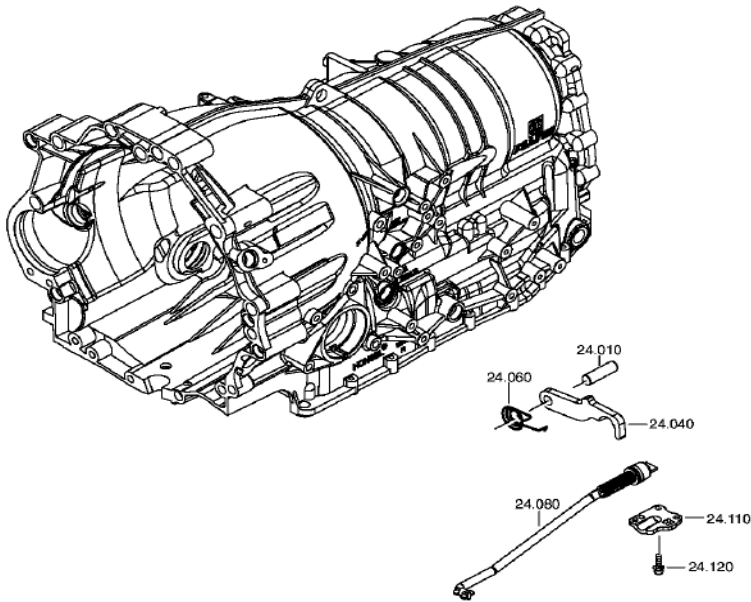
**GEARSHIFT SYSTEM M-SHIFT GROUP**

Position #	Description	Quantity	Notes
06.010	SHAFT SEAL	1	Included in overhaul kit; see page 38.
06.030	SELECTOR SHAFT ASSEMBLY	1	
06.030/110	SELECTOR SHAFT	1	
06.030/120	GEAR SHIFT LEVER	1	
06.030/130	CLAMPING SLEEVE	1	
06.050	ROOSTER COMB	1	
06.060	CLAMPING SLEEVE	1	
06.070	PIPE	1	
06.094	DETENT SPRING	1	
06.100	TORX SCREW	2	M6X13



**PARKING LOCK GROUP**

Position #	Description	Quantity	Notes
24.010	PIN	1	
24.040	PAWL	1	
24.060	LEG SPRING	1	
24.080	CONNECTING BAR	1	
24.110	GUIDING PLATE	1	
24.120	TORX SCREW	3	M6X20





**6HP19A 1071 040 XXX      SELECTIVE SHIMS**

**6HP19A SELECTIVE SHIM**

Position #	Select. Parts	Description	Quantity		Notes
10.090	<b>OIL SUPPLY SHIM</b>				
	0730.009.823	SHIM	1	5.00	
	0730.009.529	SHIM	1	4.80	
	0730.009.528	SHIM	1	4.60	
	0730.009.527	SHIM	1	4.40	
	0730.009.526	SHIM	1	4.20	
	0730.009.525	SHIM	1	4.00	
	0730.009.524	SHIM	1	3.80	
	0730.009.523	SHIM	1	3.60	
	0730.009.522	SHIM	1	3.40	
	0730.009.521	SHIM	1	3.20	
	0730.009.520	SHIM	1	3.00	
	0730.009.519	SHIM	1	2.80	
	0730.009.518	SHIM	1	2.60	

**6HP19A SELECTIVE SHIM**

Position #	Select. Parts	Description	Quantity		Notes
37.050	<b>FRONT AXLE OUTPUT SHIM</b>				
	0730.008.680	SHIM	1	3.00	
	0730.008.679	SHIM	1	2.95	
	0730.008.678	SHIM	1	2.90	
	0730.008.677	SHIM	1	2.85	
	0730.009.733	SHIM	1	2.80	
	0730.008.676	SHIM	1	2.75	
	0730.008.675	SHIM	1	2.70	
	0730.009.732	SHIM	1	2.65	
	0730.008.711	SHIM	1	2.60	
	0730.009.731	SHIM	1	2.55	
	0730.008.689	SHIM	1	2.50	
	0730.009.730	SHIM	1	2.45	
	0730.008.710	SHIM	1	2.40	
	0730.009.729	SHIM	1	2.35	
	0730.008.709	SHIM	1	2.30	
	0730.009.728	SHIM	1	2.25	
	0730.008.708	SHIM	1	2.20	
	0730.009.727	SHIM	1	2.15	
	0730.008.707	SHIM	1	2.10	
0730.009.865	SHIM	1	2.05		
0730.008.706	SHIM	1	2.00		
0730.009.864	SHIM	1	1.95		





**6HP19A 1071 040 XXX      SELECTIVE SHIMS**

**6HP19A SELECTIVE SHIM**

Position #	Select. Parts	Description	Quantity	Notes
37.250	<b>FRONT AXLE OUTPUT SHIM</b>			
	0730.007.597	SHIM	1	2.00
	0730.007.596	SHIM	1	1.95
	0730.007.595	SHIM	1	1.90
	0730.007.594	SHIM	1	1.85
	0730.007.593	SHIM	1	1.80
	0730.007.592	SHIM	1	1.75
	0730.007.591	SHIM	1	1.70
	0730.007.590	SHIM	1	1.65
	0730.007.589	SHIM	1	1.60
	0730.007.588	SHIM	1	1.55
	0730.007.587	SHIM	1	1.50
	0730.007.586	SHIM	1	1.45
	0730.007.585	SHIM	1	1.40
	0730.007.584	SHIM	1	1.35
	0730.007.583	SHIM	1	1.30
	0730.007.582	SHIM	1	1.25
	0730.007.581	SHIM	1	1.20
	0730.007.580	SHIM	1	1.15
	0730.007.579	SHIM	1	1.10
0730.007.578	SHIM	1	1.05	
0730.007.577	SHIM	1	1.00	

**6HP19A SELECTIVE SHIM**

Position #	Select. Parts	Description	Quantity	Notes
37.330	<b>FRONT AXLE OUTPUT SHIM</b>			
	0730.112.653	SHIM	1	3.20
	0730.112.652	SHIM	1	3.00
	0730.112.651	SHIM	1	2.80
	0730.112.650	SHIM	1	2.60
	0730.112.649	SHIM	1	2.40
	0730.112.648	SHIM	1	2.20
	0730.112.647	SHIM	1	2.00
	0730.112.646	SHIM	1	1.80
	0730.112.645	SHIM	1	1.60
	0730.112.644	SHIM	1	1.40
	0730.112.643	SHIM	1	1.20
	0730.112.642	SHIM	1	1.00



**6HP19A 1071 040 XXX      SELECTIVE SHIMS**

**6HP19A SELECTIVE SHIM**

Position #	Select. Parts	Description	Quantity	Notes
35.050	<b>FRONT AXLE DIFFERENTIAL SHIM</b>			
	0730.112.670	SHIM	1	1.925
	0730.106.450	SHIM	1	1.90
	0730.112.671	SHIM	1	1.875
	0730.106.449	SHIM	1	1.85
	0730.112.672	SHIM	1	1.825
	0730.106.448	SHIM	1	1.80
	0730.112.673	SHIM	1	1.775
	0730.106.447	SHIM	1	1.75
	0730.112.674	SHIM	1	1.725
	0730.106.446	SHIM	1	1.70
	0730.112.675	SHIM	1	1.675
	0730.106.445	SHIM	1	1.65
	0730.112.676	SHIM	1	1.625
	0730.106.444	SHIM	1	1.60
	0730.112.677	SHIM	1	1.575
	0730.106.443	SHIM	1	1.55
	0730.112.678	SHIM	1	1.525
	0730.106.442	SHIM	1	1.50
	0730.112.679	SHIM	1	1.475
	0730.106.441	SHIM	1	1.45
	0730.112.680	SHIM	1	1.425
	0730.106.440	SHIM	1	1.40
	0730.112.681	SHIM	1	1.375
	0730.106.439	SHIM	1	1.35
	0730.112.682	SHIM	1	1.325
	0730.106.438	SHIM	1	1.30
	0730.112.683	SHIM	1	1.275
	0730.106.437	SHIM	1	1.25
	0730.112.684	SHIM	1	1.225
	0730.106.436	SHIM	1	1.20
	0730.112.685	SHIM	1	1.175
	0730.106.435	SHIM	1	1.15
0730.112.686	SHIM	1	1.125	
0730.106.434	SHIM	1	1.10	
0730.112.687	SHIM	1	1.075	
0730.106.433	SHIM	1	1.05	
0730.112.688	SHIM	1	1.025	
0730.106.432	SHIM	1	1.00	
0730.112.689	SHIM	1	0.975	
0730.106.431	SHIM	1	0.95	
0730.112.690	SHIM	1	0.925	
0730.106.430	SHIM	1	0.90	



**6HP19A 1071 040 XXX      SELECTIVE SHIMS**

**6HP19A SELECTIVE SHIM**

Position #	Select. Parts	Description	Quantity	Notes
35.080	<b>FRONT AXLE DIFFERENTIAL SHIM</b>			
	0730.009.544	SHIM	1	1.125
	0730.009.545	SHIM	1	1.15
	0730.009.546	SHIM	1	1.175
	0730.009.547	SHIM	1	1.20
	0730.009.708	SHIM	1	1.85
	0730.009.548	SHIM	1	1.25
	0730.009.549	SHIM	1	1.275
	0730.009.550	SHIM	1	1.30
	0730.009.551	SHIM	1	1.325
	0730.009.552	SHIM	1	1.35
	0730.009.709	SHIM	1	1.375
	0730.009.553	SHIM	1	1.40
	0730.009.554	SHIM	1	1.425
	0730.009.555	SHIM	1	1.45
	0730.009.556	SHIM	1	1.475
	0730.009.557	SHIM	1	1.50
	0730.009.710	SHIM	1	1.525
	0730.009.558	SHIM	1	1.55
	0730.009.559	SHIM	1	1.575
	0730.009.560	SHIM	1	1.60
	0730.009.561	SHIM	1	1.625
	0730.009.562	SHIM	1	1.65
	0730.009.711	SHIM	1	1.675
	0730.009.563	SHIM	1	1.70
	0730.009.564	SHIM	1	1.725
	0730.009.565	SHIM	1	1.75
0730.009.566	SHIM	1	1.775	
0730.009.567	SHIM	1	1.80	
0730.009.712	SHIM	1	1.825	
0730.009.568	SHIM	1	1.85	


**6HP19A 1071 040 XXX      SELECTIVE SHIMS**
**6HP19A SELECTIVE SHIM**

Position #	Select. Parts	Description	Quantity	Notes
35.110	<b>FRONT AXLE DIFFERENTIAL SHIM</b>			
	0730.005.980	SHIM	1	1.90
	0730.009.674	SHIM	1	1.875
	0730.005.979	SHIM	1	1.85
	0730.009.673	SHIM	1	1.825
	0730.005.978	SHIM	1	1.80
	0730.009.672	SHIM	1	1.775
	0730.005.977	SHIM	1	1.75
	0730.009.671	SHIM	1	1.725
	0730.005.976	SHIM	1	1.70
	0730.009.670	SHIM	1	1.675
	0730.005.975	SHIM	1	1.65
	0730.009.669	SHIM	1	1.625
	0730.005.974	SHIM	1	1.60
	0730.009.668	SHIM	1	1.575
	0730.005.973	SHIM	1	1.55
	0730.009.667	SHIM	1	1.525
	0730.005.972	SHIM	1	1.50
	0730.009.666	SHIM	1	1.475
	0730.005.971	SHIM	1	1.45
	0730.009.665	SHIM	1	1.425
	0730.005.970	SHIM	1	1.40
	0730.009.664	SHIM	1	1.375
	0730.005.969	SHIM	1	1.35
	0730.009.663	SHIM	1	1.325
	0730.005.968	SHIM	1	1.30
	0730.009.662	SHIM	1	1.275
	0730.005.967	SHIM	1	1.25
	0730.009.661	SHIM	1	1.225
	0730.005.966	SHIM	1	1.20
	0730.009.660	SHIM	1	1.175
	0730.005.965	SHIM	1	1.15
0730.009.659	SHIM	1	1.125	
0730.005.964	SHIM	1	1.10	
0730.009.658	SHIM	1	1.075	
0730.005.963	SHIM	1	1.05	
0730.009.657	SHIM	1	1.025	
0730.005.962	SHIM	1	1.00	



**6HP19A 1071 040 XXX      SELECTIVE SNAP RINGS**

**6HP19A SELECTIVE SNAP RING**

Position #	Select. Parts	Description	Quantity		Notes
70.170	<b>COUPLING A SNAP RING</b>				
	0730.513.834	SNAP RING	1	3.20	
	0730.513.833	SNAP RING	1	3.00	
	0730.513.832	SNAP RING	1	2.80	
	0730.513.831	SNAP RING	1	2.60	
	0730.513.830	SNAP RING	1	2.40	
	0730.513.829	SNAP RING	1	2.20	
	0730.513.828	SNAP RING	1	2.00	
	0730.513.827	SNAP RING	1	1.80	

**6HP19A SELECTIVE SNAP RING**

Position #	Select. Parts	Description	Quantity		Notes
72.170	<b>COUPLING B SNAP RING</b>				
	0730.513.834	SNAP RING	1	3.20	
	0730.513.833	SNAP RING	1	3.00	
	0730.513.832	SNAP RING	1	2.80	
	0730.513.831	SNAP RING	1	2.60	
	0730.513.830	SNAP RING	1	2.40	
	0730.513.829	SNAP RING	1	2.20	
	0730.513.828	SNAP RING	1	2.00	
	0730.513.827	SNAP RING	1	1.80	

**6HP19A SELECTIVE SNAP RING**

Position #	Select. Parts	Description	Quantity		Notes
75.180	<b>COUPLING C SNAP RING</b>				
	0730.513.845	SNAP RING	1	3.60	
	0730.513.844	SNAP RING	1	3.40	
	0730.513.843	SNAP RING	1	3.20	
	0730.513.842	SNAP RING	1	3.00	
	0730.513.841	SNAP RING	1	2.80	
	0730.513.840	SNAP RING	1	2.60	
	0730.513.839	SNAP RING	1	2.40	
	0730.513.838	SNAP RING	1	2.20	
	0730.513.837	SNAP RING	1	2.00	
	0730.513.836	SNAP RING	1	1.80	



**6HP19A 1071 040 XXX      SELECTIVE SNAP RINGS**

**6HP19A SELECTIVE SNAP RING**

Position #	Select. Parts	Description	Quantity	Notes
<b>73.190</b>	<b>COUPLING D SNAP RING</b>			
	0730.513.845	SNAP RING	1	3.60
	0730.513.844	SNAP RING	1	3.40
	0730.513.843	SNAP RING	1	3.20
	0730.513.842	SNAP RING	1	3.00
	0730.513.841	SNAP RING	1	2.80
	0730.513.840	SNAP RING	1	2.60
	0730.513.839	SNAP RING	1	2.40
	0730.513.838	SNAP RING	1	2.20
	0730.513.837	SNAP RING	1	2.00
	0730.513.836	SNAP RING	1	1.80

**6HP19A SELECTIVE SNAP RING**

Position #	Select. Parts	Description	Quantity	Notes
<b>71.180</b>	<b>COUPLING E SNAP RING</b>			
	0730.513.853	SNAP RING	1	3.20
	0730.513.852	SNAP RING	1	3.00
	0730.513.851	SNAP RING	1	2.80
	0730.513.850	SNAP RING	1	2.60
	0730.513.849	SNAP RING	1	2.40
	0730.513.848	SNAP RING	1	2.20
	0730.513.847	SNAP RING	1	2.00
		0730.513.943	SNAP RING	1



Kits Content

6HP19A Kits Content

**6HP19A Friction Kit – 1071 298 013**

Position #	ZF Part #	Description	Quantity	Where used (1071 ____)	Notes
70.150	1071 272 005	Friction Plate A	4	See Chart 013 Below	
71.160	1071 271 033	Friction Plate E	6	See Chart 013 Below	
72.150	1071 272 004	Friction Plate B	6	See Chart 013 Below	
73.170	1071 273 003	Friction Plate D	5	See Chart 013 Below	
75.120	1071 275 005	Friction Plate C	4	See Chart 013 Below	

Chart 013 Friction kit applications

<b>6HP19A</b> <b>1071 040 ____</b>
009 to 010
013 to 016
019 to 024
026 to 041
044
048 to 059
063 to 084
086 to 092
094

**6HP19A Steel Kit – 1071 298 012**

Position #	ZF Part #	Description	Quantity	Where used (1071 ____)	Notes
70.140	1071 372 010	Steel Plate A	5	See Chart 012 Below	
71.150	1071 371 052	Steel Plate E	6	See Chart 012 Below	
71.170	1071 371 093	End Plate E	1	See Chart 012 Below	
72.144	1071 372 025	Steel Plate B	6	See Chart 012 Below	
72.140	1071 372 061	End Plate B	1	See Chart 012 Below	
73.160	1071 373 009	Steel Plate D	5	See Chart 012 Below	
73.180	1071 373 006	End Plate D	1	See Chart 012 Below	
75.140	1071 375 006	Steel Plate C	4	See Chart 012 Below	
75.150	1071 375 007	End Plate C	1	See Chart 012 Below	

Chart 012 Steel kit applications

<b>6HP19A</b> <b>1071 040 ____</b>
009 to 010
013 to 016
019 to 024
026 to 041
044
048 to 059
063 to 084
086 to 092
094



Kits Content

6HP19A Kits Content

6HP19A Overhaul Kit – 1071 298 010

Position #	ZF Part #	Description	Quantity	Where used 1071 040 ___	Group
75.040	0734 313 195	Round Sealing Ring	1	All	Coupling C
75.050	0734 313 222	Round Sealing Ring	1	All	Coupling C
73.020	0734 313 195	Round Sealing Ring	1	All	Coupling D
73.030	0734 313 221	Round Sealing Ring	1	All	Coupling D
73.070	0734 313 019	Round Sealing Ring	1	All	Coupling D
73.080	0734 313 221	Round Sealing Ring	1	All	Coupling D
73.080	0734 313 030	Round Sealing Ring	1	All	Coupling D
70.010/170	0501 320 493	Profiled Seal Ring	1	All	Coupling A
70.010/140	0734 313 028	Round Sealing Ring	1	All	Coupling A
70.010/130	0501 320 492	Profiled Seal Ring	1	All	Coupling A
72.050	0734 313 027	Round Sealing Ring	1	All	Coupling B
72.060	0734 313 033	Round Sealing Ring	1	All	Coupling B
72.100	0734 313 027	Round Sealing Ring	1	All	Coupling B
72.200	0734 317 403	Piston Ring	2	All	Coupling B
71.030	0734 313 040	Round Sealing Ring	1	All	Coupling E
71.040	0734 313 193	Round Sealing Ring	1	All	Coupling E
71.090	0734 313 009	Round Sealing Ring	1	All	Coupling E
71.190	0734 317 387	Sealing Ring	3	All	Coupling E
37.270/120	0734 310 409	Shaft Seal	1	All	Front axle output
37.150	1071 337 087	Gasket	1	All	Front axle output
37.170	0734 310 408	Shaft Seal	1	All	Front axle output
35.086	0734 319 703	Shaft Seal	1	All	Front axle differential
35.150/120	0734 319 645	Shaft Seal	1	All	Front axle differential
35.090/020	0501 322 711	Gasket	1	All	Front axle differential
35.076	0734 319 529	Shaft Seal	1	All	Front axle differential
35.200	0734 313 155	Round Sealing Ring	1	All	Front axle differential
35.350	0501 321 922	Screw Plug	1	All	Front axle differential
01.092	0734 313 183	Round Sealing Ring	2	All	Gearbox housing
01.100	0501 321 921	Screw Plug	1	All	Gearbox housing
01.060	0734 317 389	Sealing Sleeve	3	All	Gearbox housing
01.064	0734 317 370	Sealing Sleeve	1	All	Gearbox housing
01.140	0501 321 922	Screw Plug	2	All	Gearbox housing
01.130	0636 302 031	Screw Plug	1	All	Gearbox housing
06.010	0734 319 801	Shaft Seal	1	All	Gearshift system
27.570/120	0501 209 253	Round Sealing Ring	2	All	Mechatronic
27.600/020	0501 320 086	Sealing Ring	1	All	Mechatronic
27.460	0501 321 776	Gasket	2	All	Mechatronic
27.460	0501 321 777	Gasket	2	All	Mechatronic
03.010/140	0501 321 921	Screw Plug	1	All	Filter
03.010/130	0734 313 176	Screw Plug	1	All	Filter
03.050	1071 303 006	Gasket	1		Filter/pan gasket
03.050	0501 322 078	Gasket	1		Filter/pan gasket

Continued on next page.





Kits Content

6HP19A Kits Content

**6HP19A Overhaul Kit – 1071 298 010 (continued)**

Position #	ZF Part #	Description	Quantity	Where used 1071 040 ___	Group
10.010/170	0734 319 695	Shaft Seal	1	All	Oil supply
10.040/170	0734 401 295	Piston Ring	1	All	Oil supply
10.040/160	0734 401 291	Piston Ring	1	All	Oil supply
10.020	0734 313 083	Round Sealing Ring	1	All	Oil supply
10.070	0734 313 165	Round Sealing Ring	1	All	Oil supply
10.080	1071 210 052	Torx Screw	11	All	Oil supply
36.010/140	0734 319 649	Shaft Seal	1	All	Rear ax. Output
36.130	0734 313 095	Round Sealing Ring	1	All	Rear ax. Output

**Kits may contain items not used in all applications**