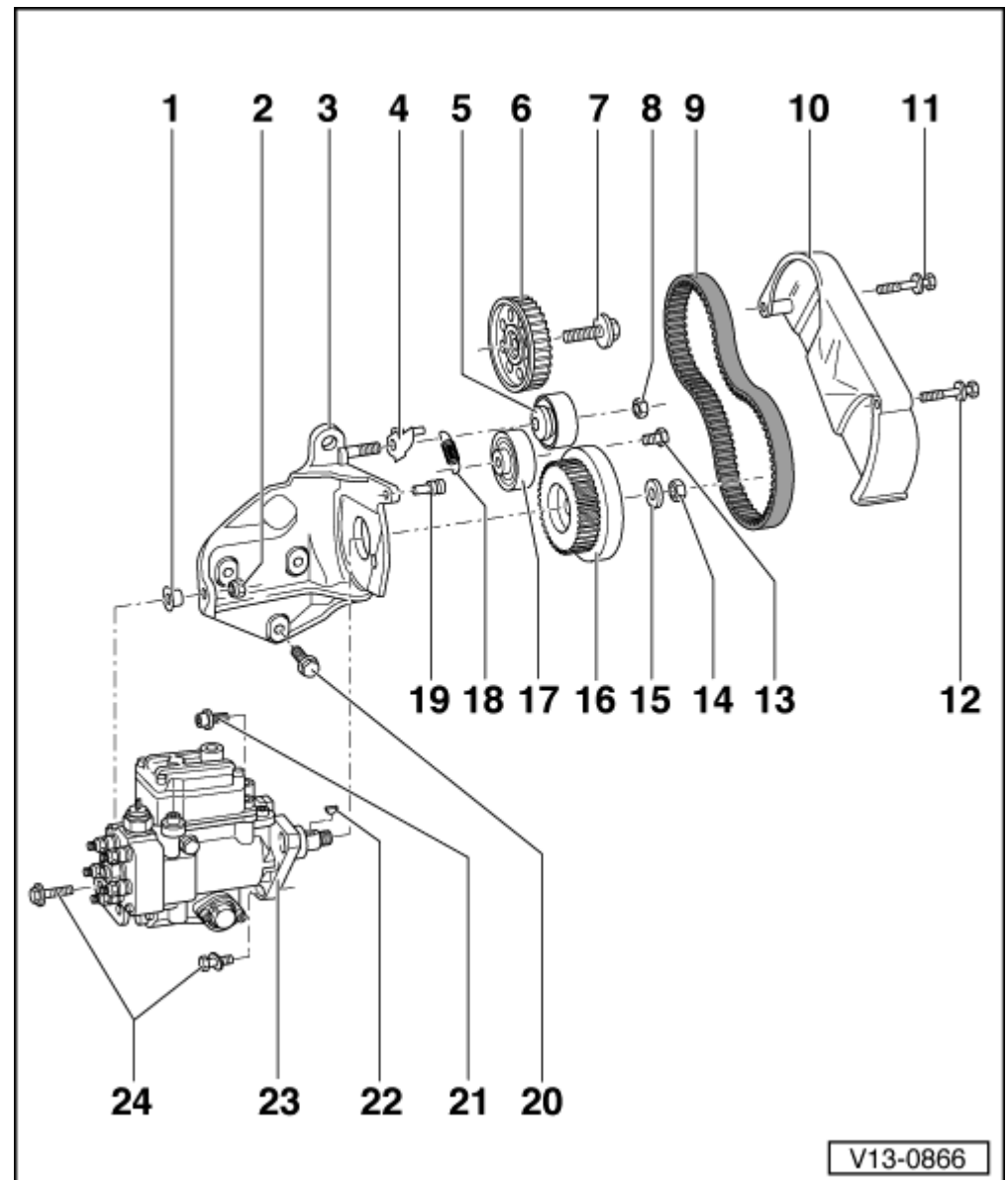


Dismantling and assembling engine Toothed belt drive for injection pump

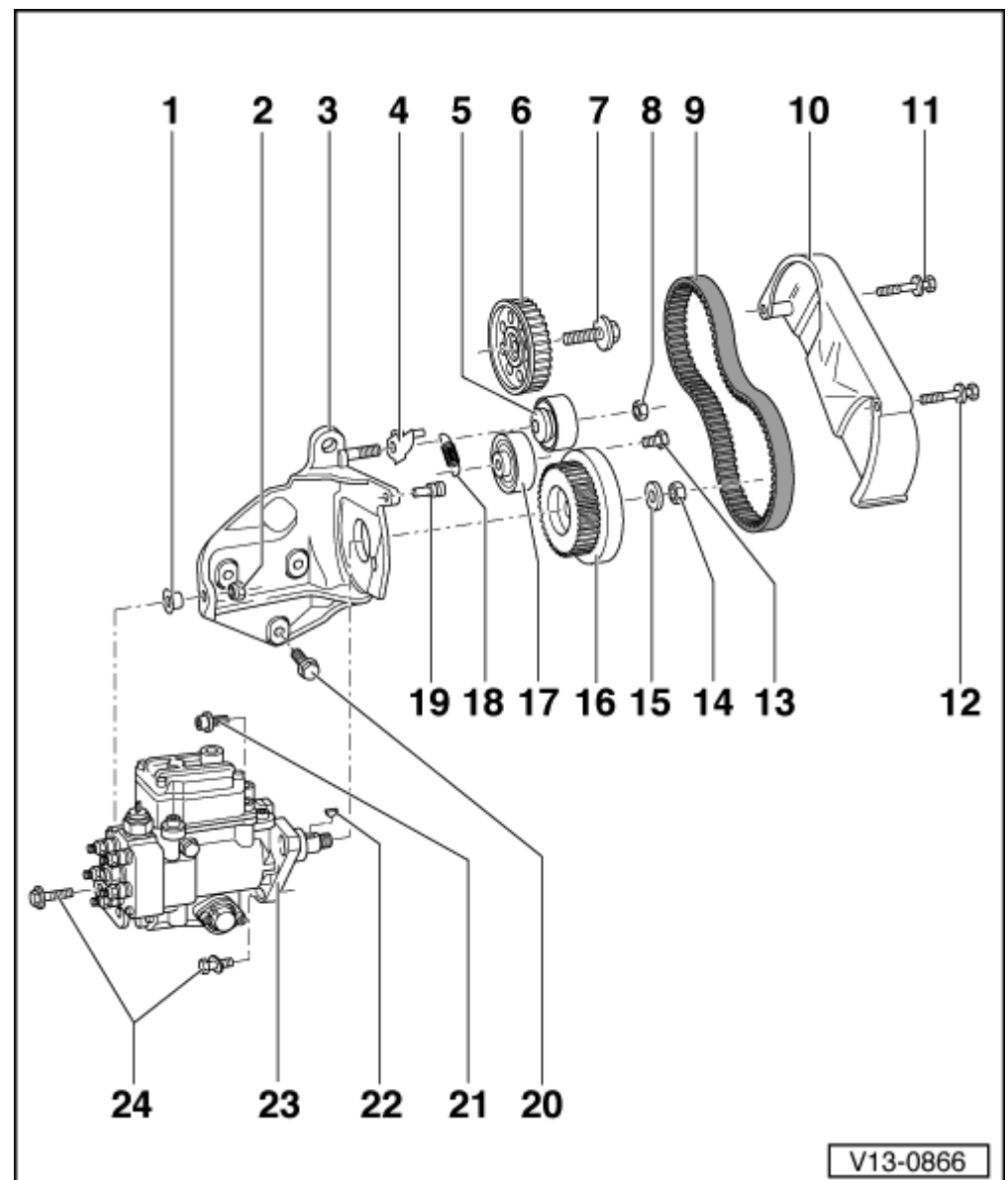
Note:

Mark the running direction with chalk or felt pen before removing the toothed belt. If the belt runs in the opposite direction when it is refitted, this can cause breakage.

1. **Bushing**
 - With taper
2. **Nut, 25 Nm**
 - With cone
3. **Console**
 - For injection pump
4. **Tensioning lever**
 - For tensioning roller
5. **Tensioning roller**



6. **Input gear**
 - For injection pump
 - Counter hold with 3036 to loosen and tighten
7. **160 Nm**
 - Securely hold input gear when releasing and tightening using counterhold 3036
8. **45 Nm**
9. **Toothed belts**
 - Mark running direction with chalk or felt pen before removing
 - Do not kink
 - Check for wear
 - Removing => Page [13-38](#)
 - Installing, tensioning => Page [13-41](#)
10. **Toothed belt guard**
 - For injection pump toothed belt
 - With mount for tensioning spring



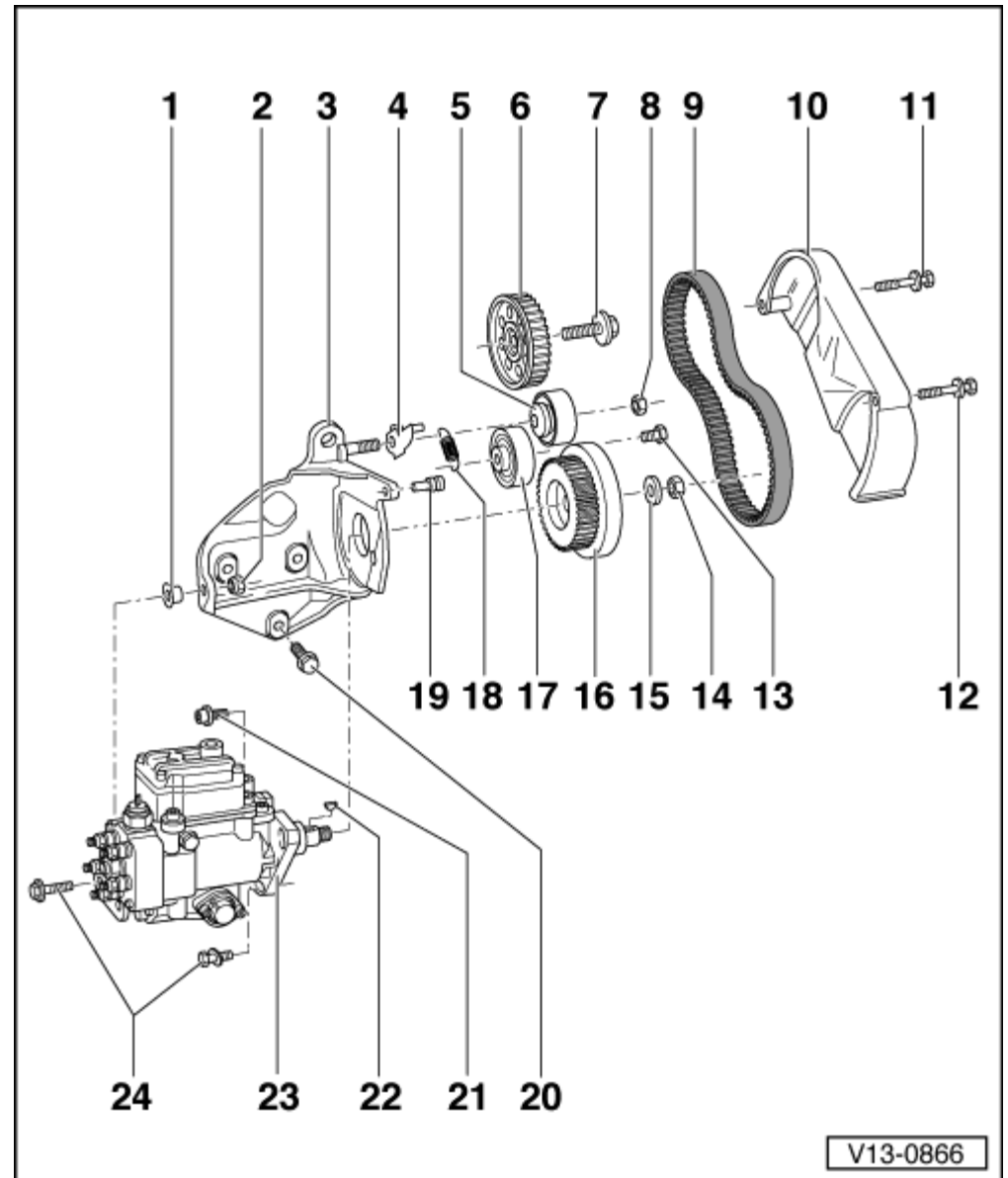
11. **20 Nm**
12. **10 Nm**
13. **20 Nm**
14. **50 Nm**
15. **Washer**
16. **Injection pump sprocket**
 - Removing and installing:

group 23; Servicing diesel direct injection system

- Watch position of Woodruff key
- Can only be installed in one position

- 17. Idler roller**
- 18. Not installed**
- 19. Pin**

- For tensioning spring



- 20. 50 Nm**
- 21. Cheese-head bolt, 25 Nm**
 - Release using socket attachment (180 mm long)
- 22. Woodruff key**
 - Ensure tight fit
- 23. Injection pump**
 - Removing and installing:

=> Diesel Direct Injection and Glow Plug System (TDI 5-cylinder); Repair group 23; Servicing diesel direct injection system

- Dynamically checking and adjusting commencement of injection.

=> Diesel Direct Injection and Glow Plug System (TDI 5-cylinder); Repair group 23; Servicing diesel direct injection system

- 24. 25 Nm**

