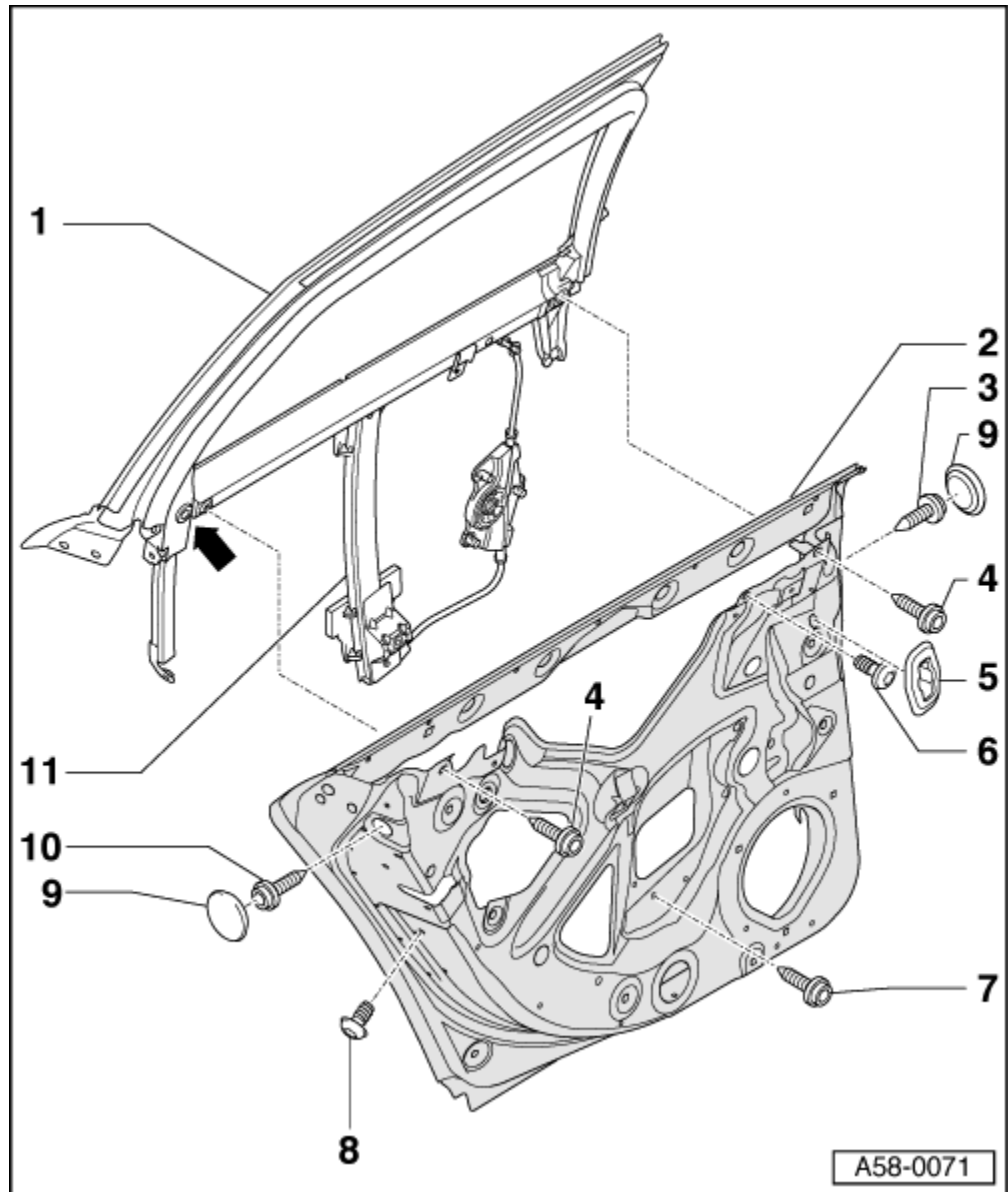


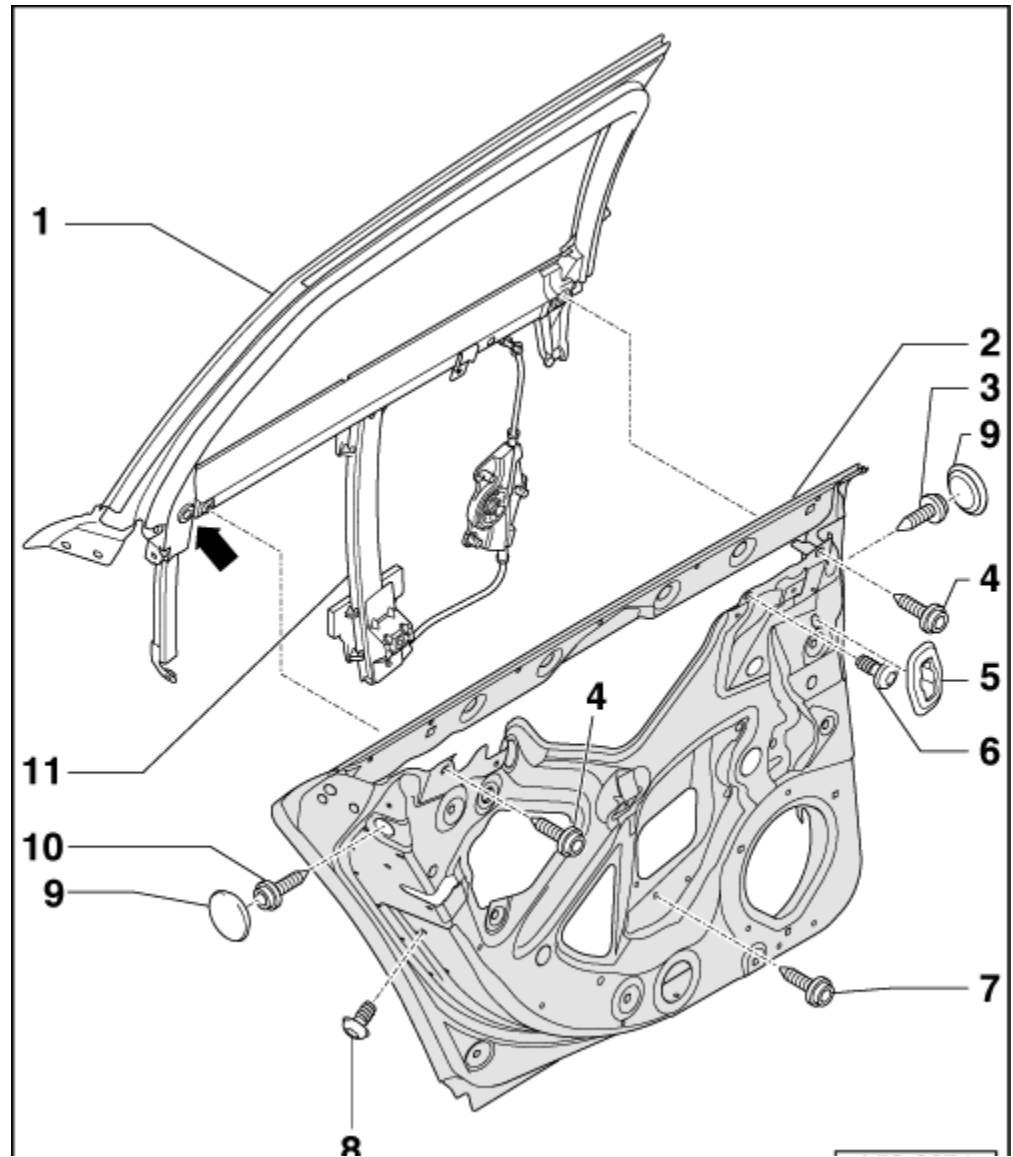
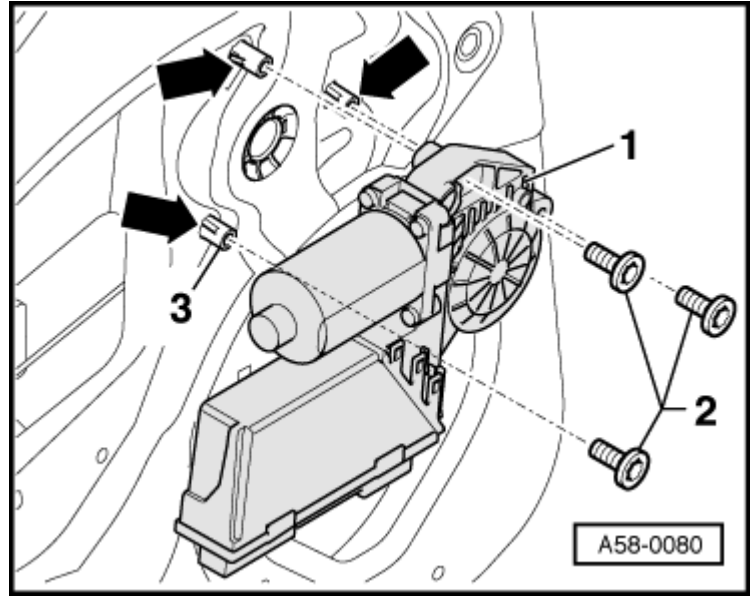
Removing and installing window frame and window lifter

1 - Window frame

- Removing:
- Remove door trim → Rep. Gr.70
- Remove window lifter motor → Fig. or manual window lifter → Fig.
- Unplug connectors.
- Screw out bolts - 7- and -8-.
- Unscrew bolts - 3-; -4-; -6- and -10- and lift window frame with window lifter out of door.
- Installing:
- Insert window frame and window lifter from above in door.
- Fasten upper half of door seal profile in position in top of window frame.
- Loosely screw in bolts -4- at front and rear.
- Then loosely screw in bolts in sequence -3-; -10-; -8-.
- Hand-tighten fitted flange bolts -4-.
- Press top of window frame -1- slightly inwards.
- Tighten bolts -3- and -10- to 32 Nm.
- Tighten collared fitted bolts -4- to 32 Nm.
- Tighten bolt -8- to 10 Nm.
- Tighten securing bolt -arrow- in window frame to 32 Nm.
- Fasten lower half of door seal in position in inner door panel.
- Use bolt -7- to attach window lifter rail to inner door panel.
- Press threaded pins of window lifter drum through inner door panel until they engage → Fig.



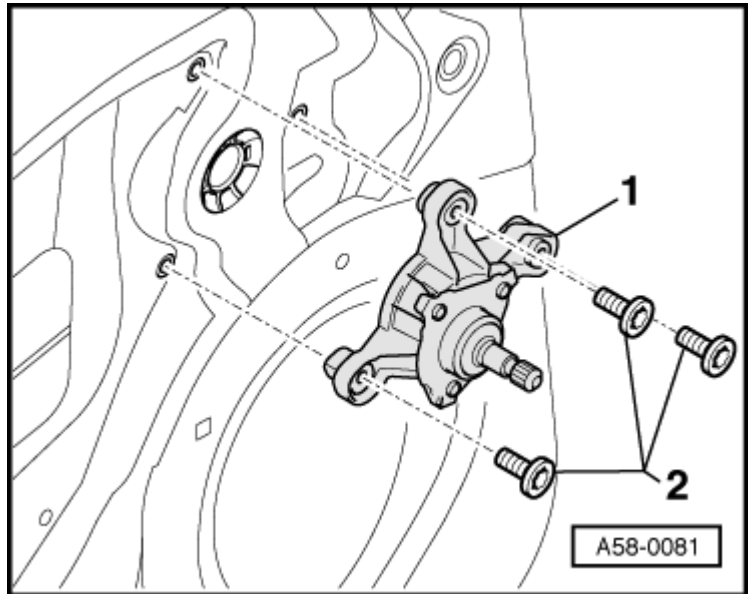
Removing and installing window lifter motor



- To remove, unscrew bolts -2- and detach window lifter motor.
- Installing window lifter motor → Chapter

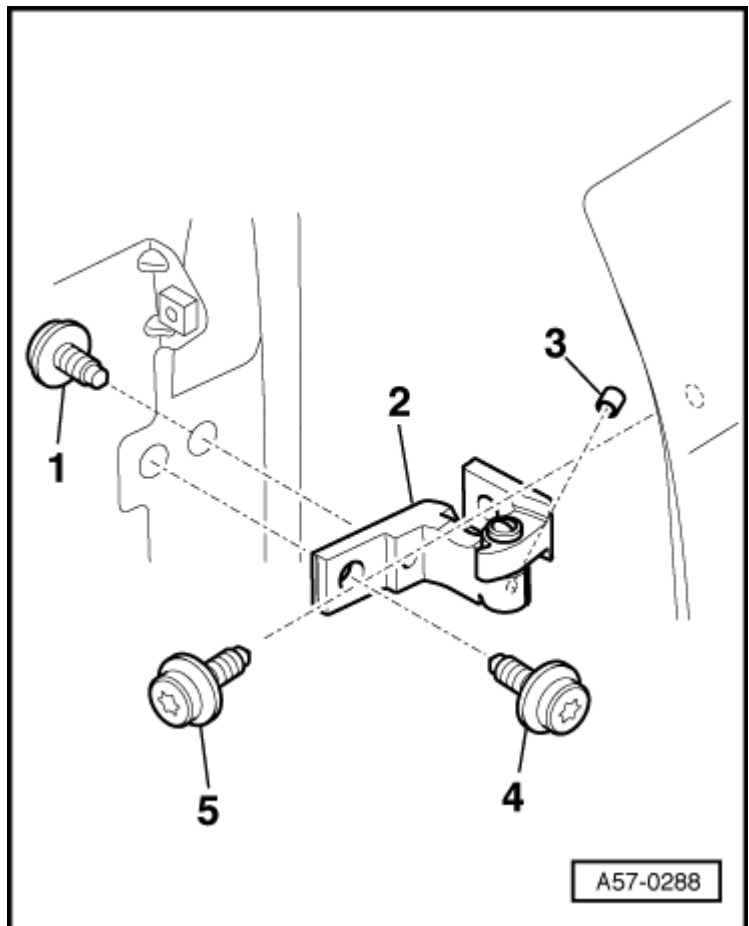
Removing and installing manual window lifter

- Unscrew bolts -2- and detach manual window lifter from inner door panel.
- Installing manual window lifter → Chapter



Upper door hinge

- Torx bolt -T45--1- (fitted from inside vehicle) 32 Nm
- Upper door hinge -2-
- Cap -3-
- Torx bolt -T45--4- 32 Nm
- Fitted bolt -5--T45- 32 Nm



Lower door hinge

- -B- pillar trim removed

- Torx bolts -T45--1- 32 Nm screwed to -B- pillar from inside vehicle
- Lower door hinge -2-
- Cap -3-
- Torx bolt -T45--4- 32 Nm
- Fitted bolt -T45--5- 32 Nm
- Re-grease lubrication points -arrows- at specified service intervals.
- Front door -6-

