

## Exploded view

**1 - Hexagon bolt, 75 Nm**

**2 - Washer**

**3 - Hexagon bolt**

- Always renew if removed

**4 - Upper link (rear)**

- Removing and installing → Chapter
- Renewing bush → Chapter

**5 - Hexagon bolt, 7 Nm**

- For adjusting toe constant "S"

**6 - Bolt**

**7 - Self-locking nut, 45 Nm**

- Always renew if removed

**8 - Hexagon bolt, 40 Nm**

**9 - Self-locking nut**

- Always renew if removed

**10 - Upper link (front)**

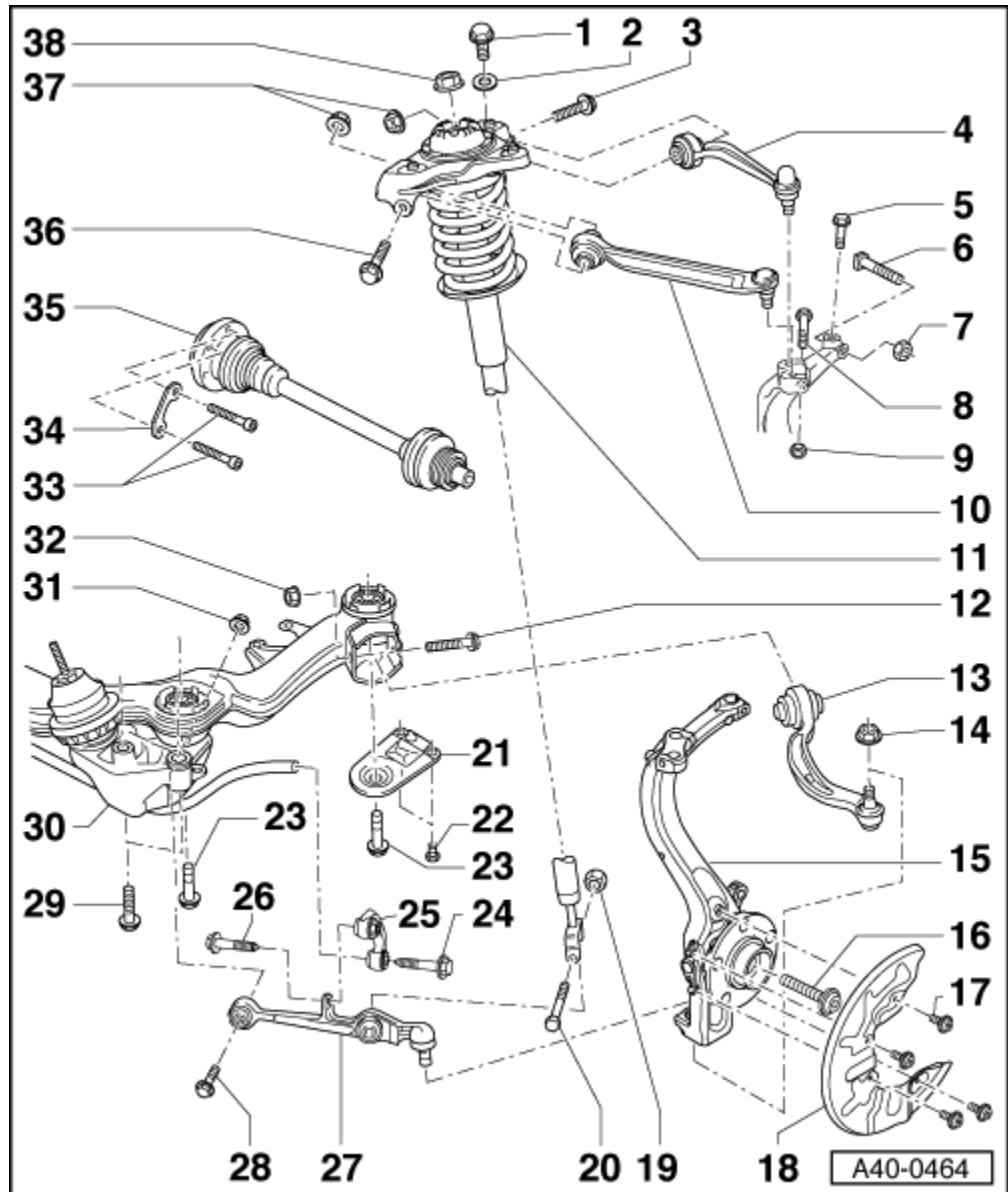
- Removing and installing mounting bracket → Chapter

- Renewing bush → Chapter

**11 - Suspension strut**

- Note different running gear versions; see vehicle data sticker → Anchor
- Draining and charging system on vehicles with Dynamic Ride Control (DRC II) → Chapter
- Removing and installing → Chapter
- Servicing → Chapter
- Removing and installing mounting bracket → Chapter

**12 - Hexagon bolt, 70 Nm and turn 180° further**



- ❑ Always renew if removed

### 13 - Guide link (bottom)

- ❑ Removing and installing guide link → [Chapter](#)
- Hydro-bush must be renewed if leaking → [Chapter](#)

### 14 - Self-locking nut, 110 Nm

- ❑ Always renew if removed

### 15 - Wheel bearing housing

- ❑ For vehicles with headlight range control, refer to notes on removing and installing sender → [Chapter](#)
- ❑ Removing and installing → [Chapter](#)
- ❑ Servicing → [Chapter](#)

### 16 - Flange bolt

- ❑ Always renew if removed
- ❑ Keep to specified sequence when loosening → [Anchor](#), and tightening → [Anchor](#)
- ❑ Tightening torque → [Anchor](#)

### 17 - Flange bolt, 10 Nm

### 18 - Splash plate

### 19 - Self-locking nut

- ❑ Always renew if removed

### 20 - Hexagon bolt, 90 Nm

### 21 - Subframe support

- ❑ Tunnel cross member can be installed instead of subframe support
- ❑ Removing and installing tunnel cross member → [Chapter](#)

### 22 - Hexagon bolt, 55 Nm

### 23 - Hexagon bolt

- ❑ 110 Nm and turn 90° further
- ❑ Always renew if removed
- ❑ Thread in body can be repaired using wire thread insert according to DIN 8140 (Helicoil). The thread insert must be of the same length as the thread in the body.

### 24 - Hexagon bolt

- ❑ 40 Nm and turn 90° further
- ❑ Always renew if removed

### 25 - Coupling rod

### 26 - Hexagon bolt

- ❑ 40 Nm and turn 90° further
- ❑ Always renew if removed

### 27 - Track control link (bottom)

- ❑ For vehicles with headlight range control, refer to notes on removing and installing sender → [Chapter](#)
- ❑ Removing and installing track control link (all engine versions except 3.0 ltr. TDI and 3.2 ltr. FSI)

→ [Chapter](#)

- ❑ Removing and installing track control link (vehicles with 3.0 ltr. TDI and 3.2 ltr. FSI engines) → [Chapter](#)

### **28 - Hexagon bolt, 70 Nm and turn 180° further**

- ❑ Always renew if removed

### **29 - Hexagon bolt, 75 Nm**

- ❑ Always renew if removed
- ❑ Thread in body can be repaired using wire thread insert according to DIN 8140 (Helicoil). The thread insert must be of the same length as the thread in the body.

### **30 - Subframe**

- ❑ Different versions available → [Chapter](#)
- ❑ For correct version refer to → [Parts catalogue](#)
- ❑ For vehicles with headlight range control, refer to notes on removing and installing sender → [Chapter](#)
- ❑ Removing and installing → [Chapter](#)
- ❑ Renewing bonded rubber bushes in subframe → [Chapter](#)
- ❑ Removing and installing tunnel cross member → [Chapter](#)

### **31 - Self-locking nut**

- ❑ Always renew if removed

### **32 - Self-locking nut**

- ❑ Always renew if removed

### **33 - Multi-point socket head bolt**

- ❑ First pre-tighten all bolts to 15 Nm, then tighten all bolts to final specified torque
- ❑ Tightening torques:  
M 8 bolt: 40 Nm  
M10 bolt: 70 Nm

### **34 - Lock plate**

### **35 - Drive shaft**

- ❑ Removing and installing → [Chapter](#)

### **36 - Hexagon bolt**

- ❑ Always renew if removed

### **37 - Self-locking nut**

- ❑ 50 Nm and turn 90° further
- ❑ Always renew if removed

### **38 - Flange nut**

- ❑ 50 Nm
- ❑ Always renew if removed