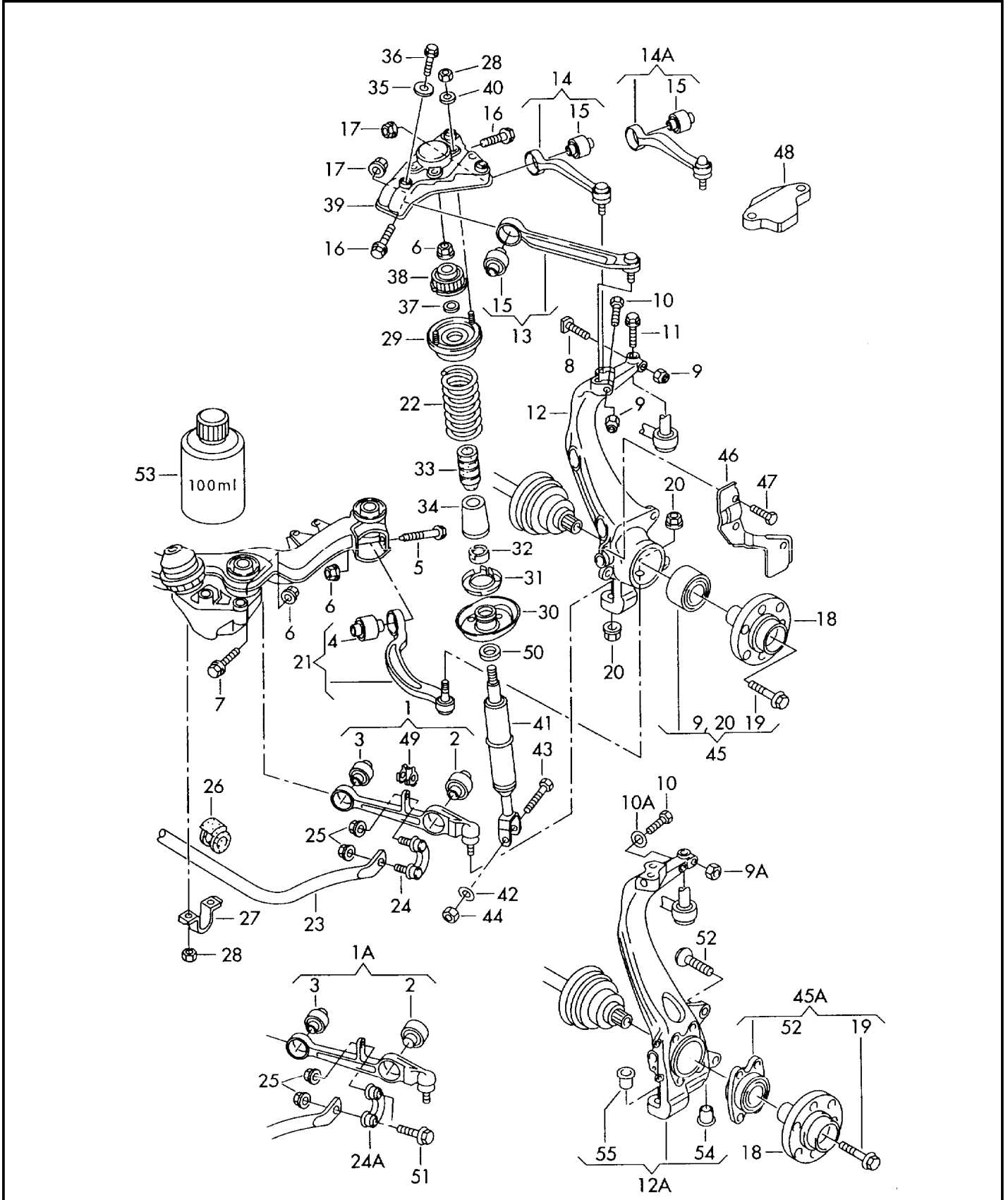




ETKA

Model	Year	MG	SG	Illustration	Restrictions	UPD	20:33	20.01.2010
A4Q	1997	4	07	407-10		761		





ETKA

Model	Year	MG	SG	Illustration	Restrictions	UPD	20:33	20.01.2010
A4Q	1997	4	07	407-10		761		

Pos	Part Number	Description	Remark	Qty	Model
		front wishbone link wheel bearing housing wheel hub suspension stabilizer	front		ADR, AEB, AFY, ABC, AAH, ACZ, ACK, AFN, AEB
1	* 4D0 407 151 P	front wishbone link also use:	8D0 411 357	2 X	
2	4D0 407 181 H	bonded rubber mounting		2	
3	4D0 407 182 E	bonded rubber mounting		2	
4	4D0 407 183 Q	bonded rubber mounting		2	
5	N 906 259 02	bolt, hex. hd. with pin (combi)	M12X1,5X120X80	2	
6	N 101 064 02	shouldered hex. nut, self-locking	M12X1,5	6	
7	N 102 949 01	hexagon head bolt (combi)	M12X1,5X100-	2	
8	+ 4D0 407 192 C	lock screw	M10X50	2	
9	+ N 102 861 02	shouldered hex. nut, self-locking	M10	4	
10	+ N 034 790 7	hexagonal head bolt	M10X100	2	
11	+ N 906 289 01	hexagon head bolt (combi)	M8X25	2	
12	8D0 407 257 AL	wheel bearing housing	75MM left	1	ADR, AFY, AEB, AFN
(12)	8D0 407 258 AL	wheel bearing housing	75MM right	1	ADR, AFY, AEB, AFN
(12)	8D0 407 257 AM	wheel bearing housing	82MM left also use: >>8D-T-160955	1	AAH, AFC, ABC, ACZ, ACK, AHA
			4D0 407 625 E	1	
			N 034 790 7	1	
			N 102 861 02	1	
(12)	8D0 407 258 AM	wheel bearing housing	82MM right also use: >>8D-T-160955	1	AAH, AFC, ABC, ACZ, ACK, AHA
			4D0 407 625 E	1	
			N 034 790 7	1	
			N 102 861 02	1	
13	8E0 407 505 A	upper link	left front upper	1	
(13)	8E0 407 506 A	upper link	right front upper	1	
14	8D0 407 509 G	upper link F >> 8D-V-160 000*	left rear upper	1	



ETKA

Model	Year	MG	SG	Illustration	Restrictions	UPD	20:33	20.01.2010
A4Q	1997	4	07	407-10		761		

Pos	Part Number	Description	Remark	Qty	Model
(14)	8D0 407 509 G	upper link F >> 8D-V-160 000*	left rear	1	
14A	4D0 407 509 J	upper link F 8D-V-160 001>>*	left rear upper	1	
(14)	8D0 407 510 G	upper link F >> 8D-V-160 000*	right rear upper	1	
(14A)	4D0 407 510 J	upper link F 4D-V-160 001>>*	right rear upper	1	
15	4D0 407 515 C	bonded rubber mounting		4	
16	+ N 103 291 01	hexagon head bolt (combi)	M10X60X45	4	
17	+ N 102 861 02	shouldered hex. nut, self-locking	M10	4	
18	4A0 407 615 F	wheel hub	5/112	2	AAH,ABC,ACZ, ACK
(18)	8D0 407 615 E	wheel hub	5/112	2	ADR,AEB,AFY, AFN
19	4A0 407 643 A	shouldered bolt	M16X1,5X77	2	AAH,ABC,ACZ ACK
(19)	4B0 407 643	shouldered bolt	M14X1,5X73	2	ADR,AEB,AFY
20	4D0 407 644 A	shouldered nut	M12X1,5	4	
21	8E0 407 693 Q	guide link	left front	1	
(21)	8E0 407 694 Q	guide link	right front	1	
22	8D0 411 105 AN	coil spring 1 paint mark 3 paint marks	violet brown	2	5-speed man. gearbox: AEB,ADR,AFY
(22)	8D0 411 105 AN	coil spring 1 paint mark 3 paint marks for models with heavy duty suspension	violet brown	2	5-speed man. gearbox: ADR,AFY,AEB
(22)	8D0 411 105 AP	coil spring 1 paint mark 1 paint mark	white brown	2	air condit./ 5-speed man. gearbox: AEB,ADR,AFY 5-speed automatic: AEB
(22)	8D0 411 105 AP	coil spring 1 paint mark 1 paint mark for models with heavy duty suspension	white brown	2	air condit., 5-speed man. gearbox: ADR,AFY,AEB



ETKA

Model	Year	MG	SG	Illustration	Restrictions	UPD	20:33	20.01.2010
A4Q	1997	4	07	407-10		761		

Pos	Part Number	Description	Remark	Qty	Model
(22)	8D0 411 105 AQ	coil spring 1 paint mark 2 paint marks	white brown	2	5-speed man. gearbox: ABC,ACZ,AFN
(22)	8D0 411 105 AQ	coil spring 1 paint mark 2 paint marks for models with heavy duty suspension	white brown	2	air condit., 5-speed man. gearbox: AEB,AFN
(22)	8D0 411 105 AR	coil spring 1 paint mark 3 paint marks	white brown	2	5-speed man. gearbox: AAH,AFC,ACK air condit./ 5-speed man. gearbox: ABC,ACZ,AFN
(22)	8D0 411 105 AR	coil spring 1 paint mark 3 paint marks for models with heavy duty suspension	front white brown	2	air condit., 5-speed man. gearbox: AFN
(22)	8D0 411 105 AS	coil spring 1 paint mark 1 paint mark	yellow brown	2	air condit./ 5-speed man. gearbox: AAH,ACK,AHA
(22)	8D0 411 105 AS	coil spring 1 paint mark 1 paint mark for models with heavy duty suspension	yellow brown	2	air condit., 5-speed man. gearbox: AFN,ABC,AAH, AFC
(22)	8D0 411 105 AT	coil spring 1 paint mark 2 paint marks	yellow brown	2	5-speed automatic: AAH,AFC,ACK
(22)	8D0 411 105 BA	coil spring 1 paint mark 3 paint marks	front yellow brown	2	air condit./ 5-speed automatic: AAH,AFC,ACK
(22)	8D0 411 105 P	coil spring for sports-type running gear 1 paint mark 3 paint marks	grey violet	2	5-speed man. gearbox: ADR,AFY,AEB air condit./ manual- gearbox: ADR,AFY,AEB
(22)	8D0 411 105 Q	coil spring for sports-type running gear 1 paint mark 1 paint mark	green violet	2	5-speed man. gearbox: ABC,ACZ,AFN



ETKA

Model	Year	MG	SG	Illustration	Restrictions	UPD	20:33	20.01.2010
A4Q	1997	4	07	407-10		761		

Pos	Part Number	Description	Remark	Qty	Model
(22)	8D0 411 105 R	coil spring for sports-type running gear 1 paint mark 2 paint marks	green violet	2	5-speed man. gearbox: AAH,AFC,ACK air condit./ 5-speed man. gearbox: ABC,ACZ,AFN
(22)	8D0 411 105 S	coil spring for sports-type running gear 1 paint mark 3 paint marks	green violet	2	air condit./ 5-speed man. gearbox: AAH,AFC,ACK
(22)	8D0 411 105 T	coil spring for sports-type running gear 1 paint mark 1 paint mark	front yellow violet	2	5-speed automatic: AAH,AFC,ACK
(22)	8D0 411 105 AA	coil spring for sports-type running gear 1 paint mark 2 paint marks	yellow violet	2	air condit./ 5-speed automatic: AAH,AFC,ACK
(23)	8D0 411 309 M	stabilizer		1	
(23)	8D0 411 309 L	stabilizer for vehicles with sports-type running gear		1	
24A	8D0 411 317 D	connecting link marked with: also use:	left blue N 102 861 10 N 104 253 02	1 2 2	
(24A)	8D0 411 318 D	connecting link marked with: also use:	right yellow N 102 861 10 N 104 253 02	1 2 2	
25	+ N 102 861 02	shouldered hex. nut, self-locking	M10	4	
26	4D0 411 327 H	rubber mounting	27MM	2	
27	4D0 411 336 D	clamp		2	
28	+ N 011 184 9	hexagon nut, self-locking	M8	8	
29	8D0 412 065	spring disc	upper	2	
30	8D0 412 103 B	spring disc	lower	2	
31	4D0 412 107 B	base	lower	2	
32	4D0 412 127	protective cap	lower	2	
33	8D0 412 131 F	helper spring		2	
(33)	8D0 412 131 E	helper spring for sports-type running gear	77MM	2	



ETKA

Model	Year	MG	SG	Illustration	Restrictions	UPD	20:33	20.01.2010
A4Q	1997	4	07	407-10		761		

Pos	Part Number	Description	Remark	Qty	Model
34	4D0 412 137 C	boot		2	
35	8D0 412 145 B	washer	5X16,2X40	6	
36	N 906 589 01	hexagon head bolt c/w shoulder	M10X22	6	
37	4D0 412 369 A	washer	4X12,1X20	2	
(38)	4D0 412 377 F	bearing	front, upper	2	
39	8D0 412 391 B	bearing bracket		2	
40	+ N 011 558 11	washer	8,4X15X1,6	4	
(41)	b 8D0 413 031 BK	gas-filled shock absorber		2	ADR,AEB,AFY, AFN,ADP
		also use:	8D0 412 066 F	2	
-	8D0 412 066 F	spring disc	lower	2	8 cylinder
(41)	b 8D0 413 031 BL	gas-filled shock absorber for sports-type running gear		2	ADR,AFY,AEB, AFN
		also use:	8D0 412 066 F	2	
(41)	b 8D0 413 031 BM	gas-filled shock absorber		2	AAH,ABC,ACZ, ACK
		also use:	8D0 412 066 F	2	
(41)	b 8D0 413 031 BN	gas-filled shock absorber for sports-type running gear marked with:	pink or light blue	2	AAH,ABC,ACZ, ACK
		also use:	8D0 412 066 F	2	
(41)	b 8D0 413 031 BP	gas-filled shock absorber for models with heavy duty suspension		2	ADR,AFY,AEB, AFN
		also use:	8D0 412 066 F	2	
(41)	b 8D0 413 031 AG	gas-filled shock absorber for models with heavy duty suspension		2	ABC
42	--- --- ---	no longer available	A13X24X2,5	2	
43	N 102 412 02	hexagonal head bolt	M12X1,5X85	2	
44	N 906 350 01	hexagon nut, self-locking	M12X1,5	2	
45	b 4B0 498 625	wheel bearing with mounting parts	75MM	2	ADR,AEB,AFY, AFN
(45)	b 8D0 498 625 A	wheel bearing with mounting parts F >> 8D-T-160 955	85MM	2	AAH,ABC,ACZ



ETKA

Model	Year	MG	SG	Illustration	Restrictions	UPD	20:33	20.01.2010
A4Q	1997	4	07	407-10		761		

Pos	Part Number	Description	Remark	Qty	Model
(45)	b 4B0 498 625 A	wheel bearing with mounting parts F 8D-T-160 956>>	82MM	2	AAH,ABC,ACZ,ACK
46	8D0 615 311 E	splash shield for brake disc	left	1	
(46)	8D0 615 312 E	splash shield for brake disc	right	1	
47	+ N 905 293 01	hexagonal head bolt	M6X10	6	
48	8D0 407 069	stop plate F >> 8D-V-160 000*	left	1	
(48)	8D0 407 070	stop plate F >> 8D-V-160 001*	right	1	
49	8D0 411 357	clips		2	
51	N 104 253 02	hexagon head bolt (combi)	M10X62X45	4	
53	G 294 421 A1	assembly lubricant see workshop manual	100ML	X	